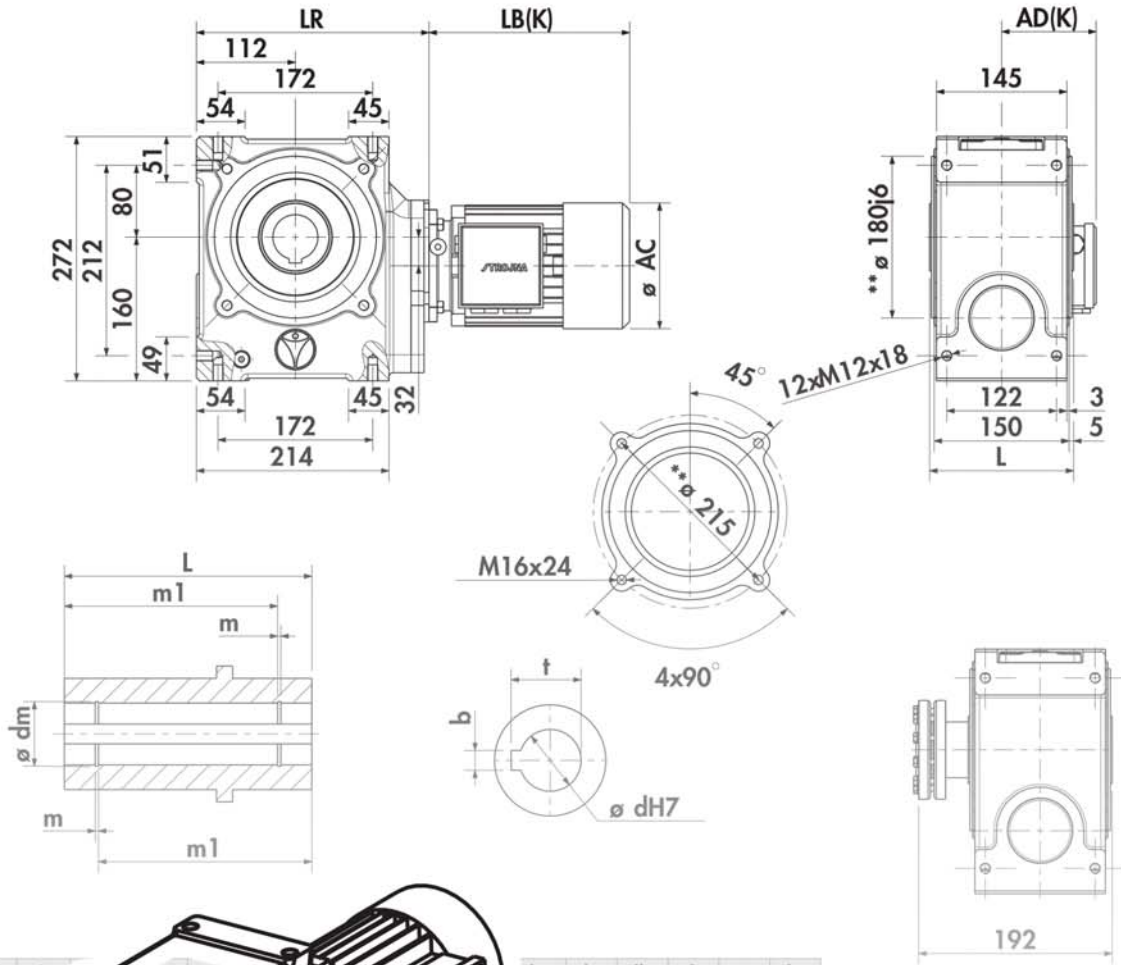




**SG**

# HELICAL WORM GEAR UNIT

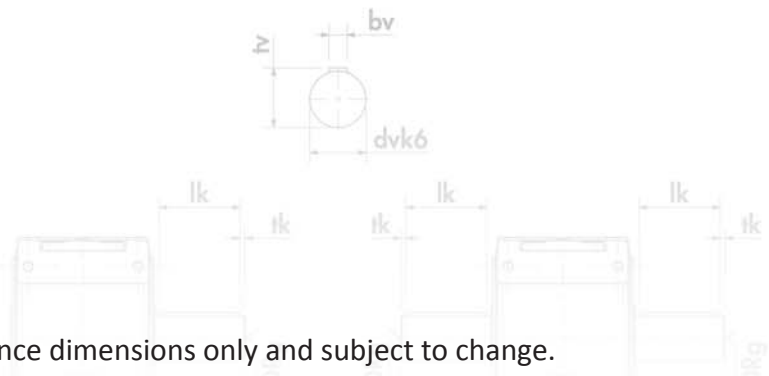
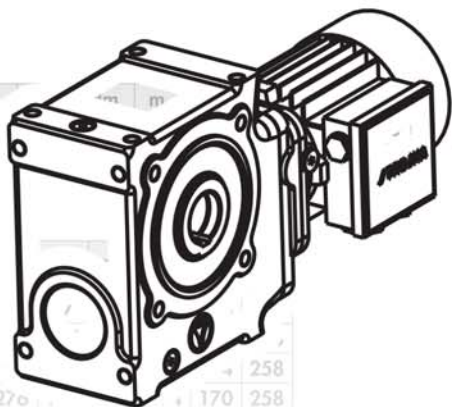
Dimension sheets - Geared motors



d	L
*50	160

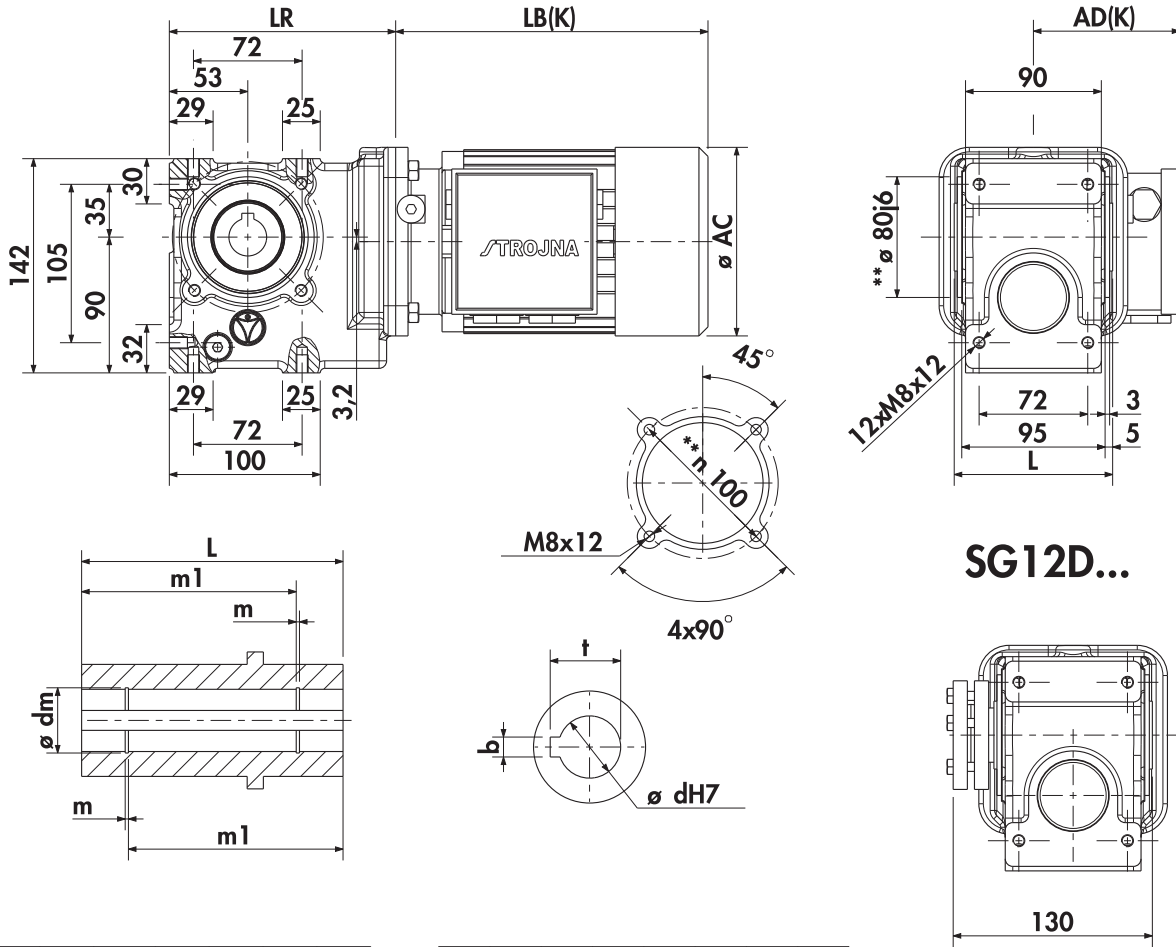
bv	lv	lk	tk	g	lz
14	100	80	10	M16	360

SMB/ SMR						
63						
71						
80						258
90S	270					170 258
90L	301	121	385	164	170	258
100	329	157	418	174	193	362
112M	334	169	413	199	216	362
132S	377	190	492	183	247	375
132M	415	190	532	183	247	375
132Mn	415	190	532	183	247	375
160M						
160L						

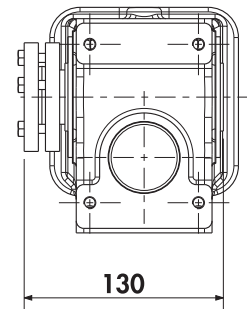


Drawings are for reference dimensions only and subject to change.  
We reserve the right to change technical data or dimensions due to modifications.

## SG12...SMB/SMR



## SG12D...



d	L	m1	dm	m	t	b
20	105	97	21	1,3	22,8	6
*25	105	91	26,2	1,3	28,3	8

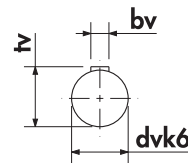
dv	tv	bv	lv	lk	tk	g	lz
20	22,5	6	40	30	5	M6	185
*25	28	8	50	40	5	M10	205

SMB/SMR	LB	AD	LBK	ADK	AC	LR
63	207	97	260	125	125	151
71	223	105	280	137	140	151
80	251	110	311	147	154	151
90S	276	121	360	164	170	151
90L	301	121	385	164	170	151
100						
112M						
132S						
132M						
132Mα						
160M						
160L						
180M						
180L						
200L						
225S						
225M						
250M						

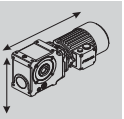
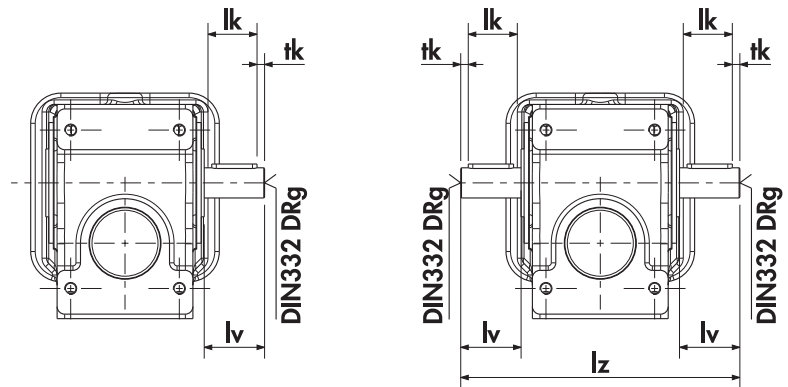
\* Standard

\*\* C Flange DIN42948

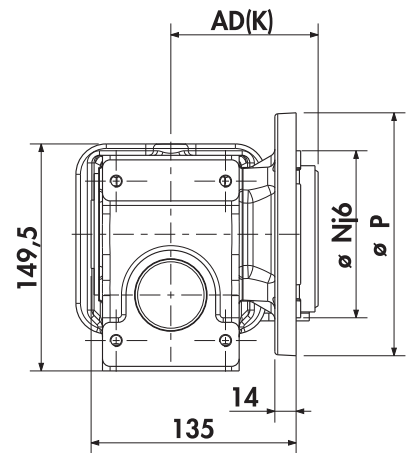
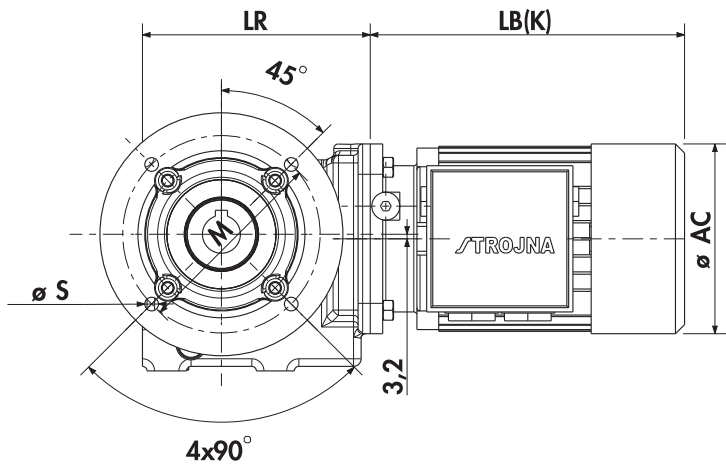
## SG12V...



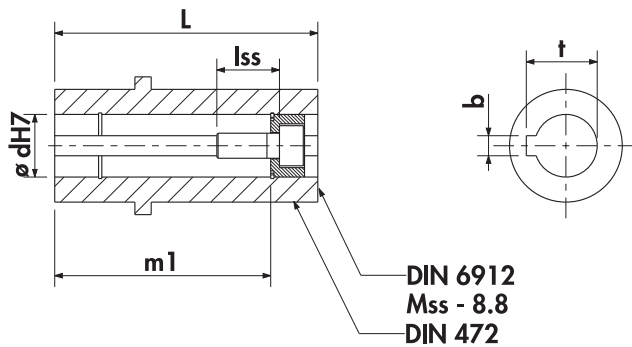
## SG12Z...



## SG12P...SMB/SMR



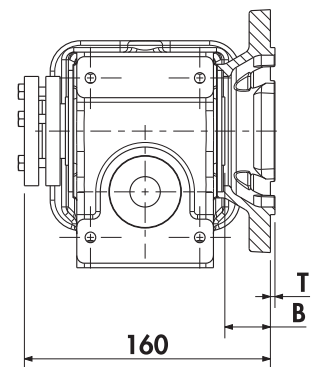
DIN42948	P	N	M	T	B	S
*A160	160	110	130	3	30	9
A200	200	130	165	3	30	11



d	L	m1	lss	Mss	t	b
20	105	97	20	M6	22,8	6
*25	105	91	25	M10	28,3	8

dv	tv	bv	lv	lk	tk	xv	g	lz
20	22,5	6	40	30	5	7	M6	185
*25	28	8	50	40	5	17	M10	205

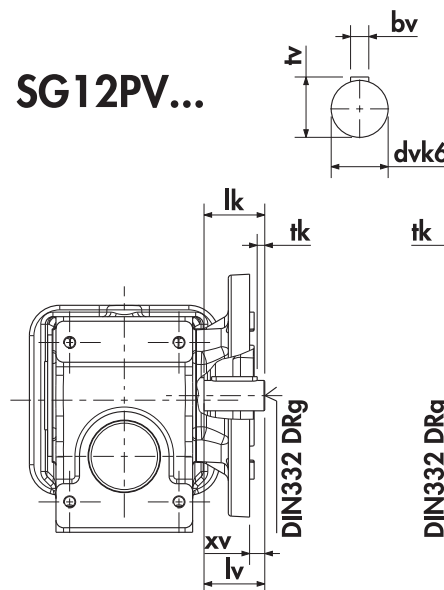
## SG12PD...



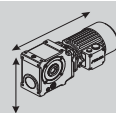
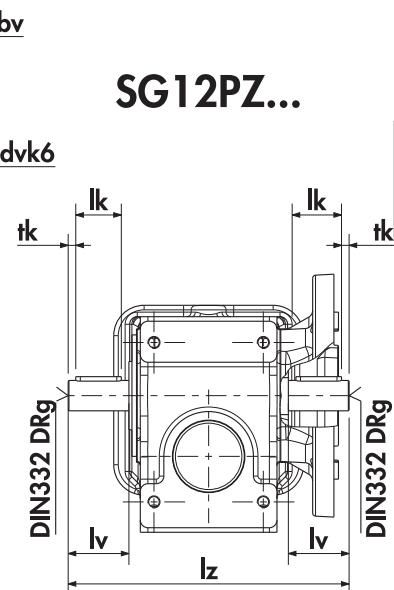
SMB/SMR	LB	AD	LBK	ADK	AC	LR
63	207	97	260	125	125	151
71	223	105	280	137	140	151
80	251	110	311	147	154	151
90S	276	121	360	164	170	151
90L	301	121	385	164	170	151
100						
112M						
132S						
132M						
132Ma						
160M						
160L						
180M						
180L						
200L						
225S						
225M						
250M						

\* Standard

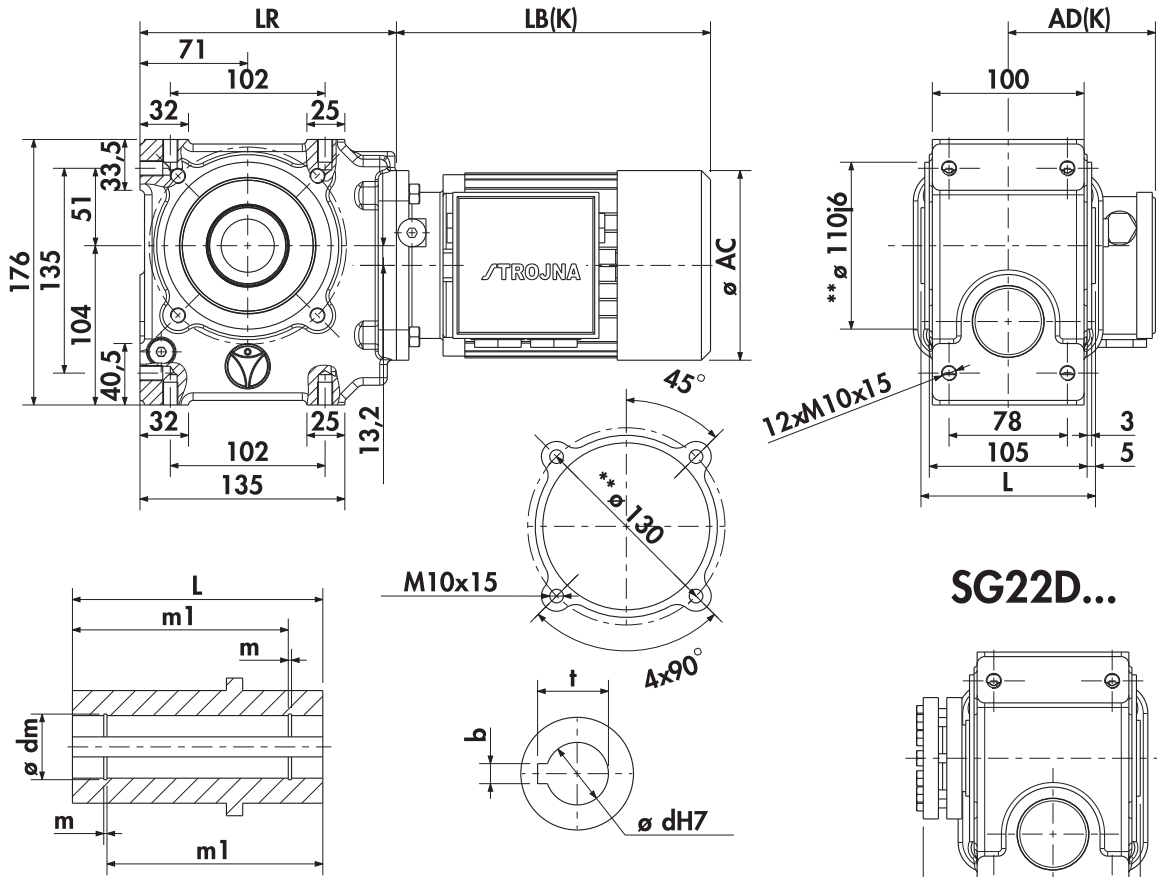
## SG12PV...



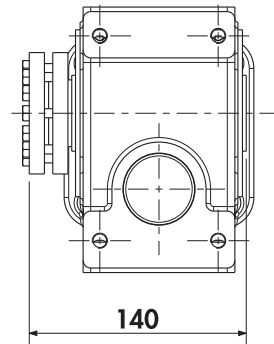
## SG12PZ...



## SG22...SMB/SMR



## SG22D...



d	L	m1	dm	m	t	b
25	115	107	26,2	1,3	28,3	8
*30	115	101	31,4	1,3	33,3	8

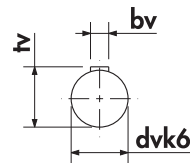
dv	tv	bv	lv	lk	tk	g	lz
25	28	8	50	40	5	M10	215
*30	33	8	60	50	5	M10	235

SMB/SMR	LB	AD	LBK	ADK	AC	LR
63	207	97	260	125	125	169
71	223	105	280	137	140	169
80	251	110	311	147	154	169
90S	276	121	360	164	170	169
90L	301	121	385	164	170	169
100						
112M						
132S						
132M						
132Ma						
160M						
160L						
180M						
180L						
200L						
225S						
225M						
250M						

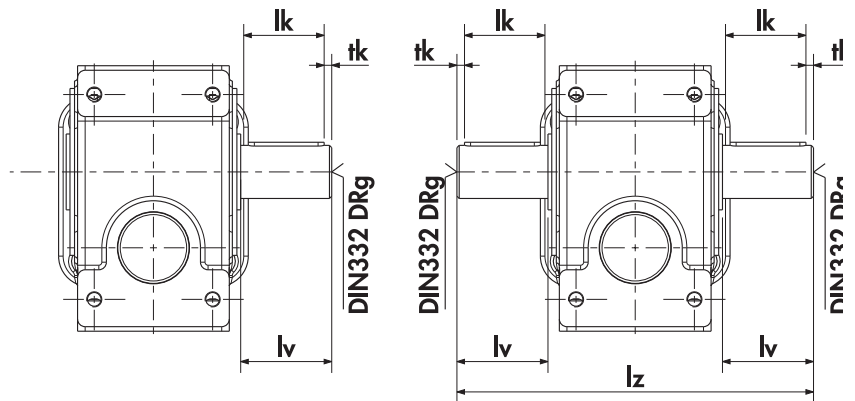
\* Standard

\*\* C Flange DIN42948

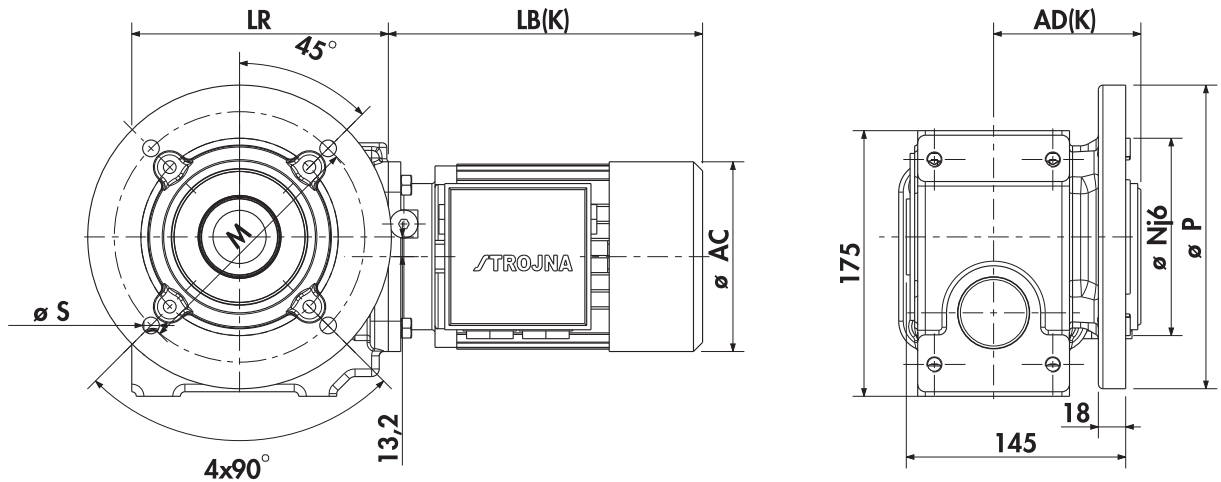
## SG22V...



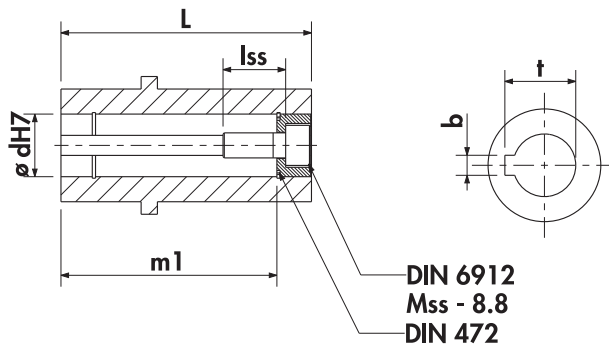
## SG22Z...



## SG22P...SMB/SMR



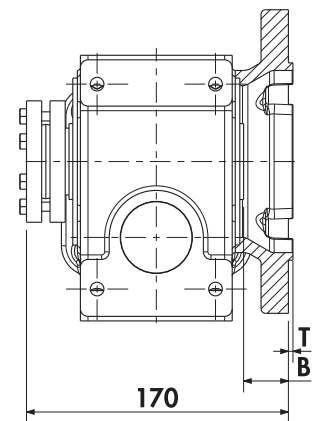
DIN42948	P	N	M	T	B	S
*A200	200	130	165	3	30	11
A250	250	180	215	4	30	14



d	L	m1	lss	Mss	t	b
25	115	107	25	M10	28,3	8
*30	115	101	25	M10	33,3	8

dv	tv	bv	lv	lk	tk	xv	g	lz
25	28	8	50	40	5	17	M10	215
*30	33	8	60	50	5	27	M10	235

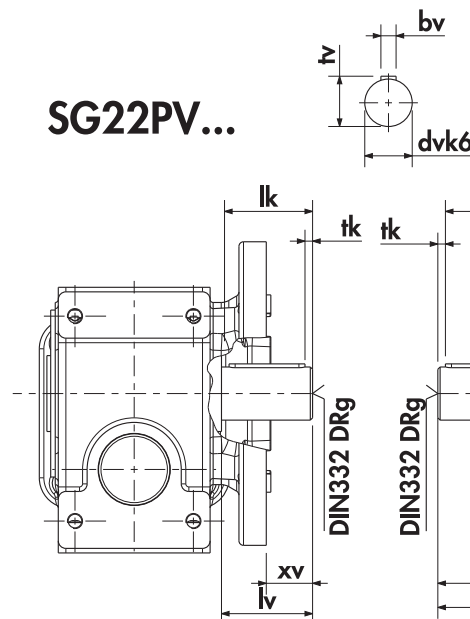
## SG22PD...



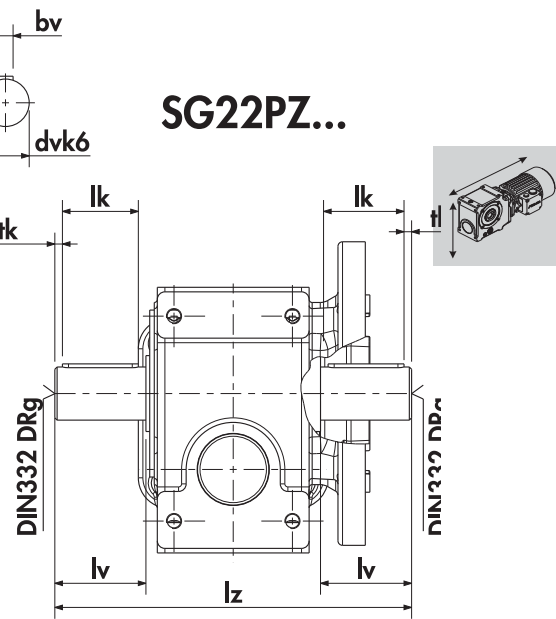
SMB/SMR	LB	AD	LBK	ADK	AC	LR
63	207	97	260	125	125	169
71	223	105	280	137	140	169
80	251	110	311	147	154	169
90S	276	121	360	164	170	169
90L	301	121	385	164	170	169
100						
112M						
132S						
132M						
132Ma						
160M						
160L						
180M						
180L						
200L						
225S						
225M						
250M						

\* Standard

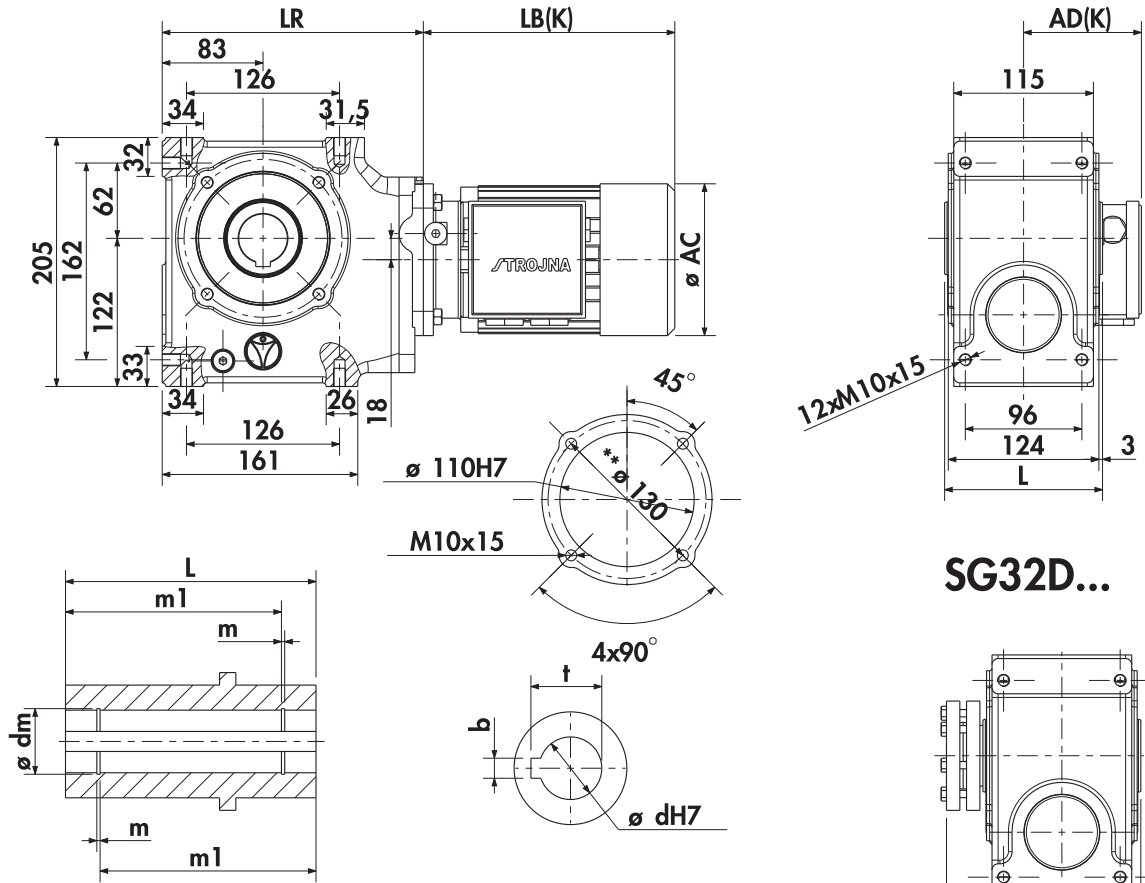
## SG22PV...



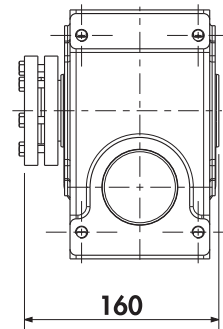
## SG22PZ...



## SG32...SMB/SMR



## SG32D...



d	L	m1	dm	m	t	b
30	130	122	31,4	1,3	33,3	8
*35	130	115	37	1,6	38,3	10

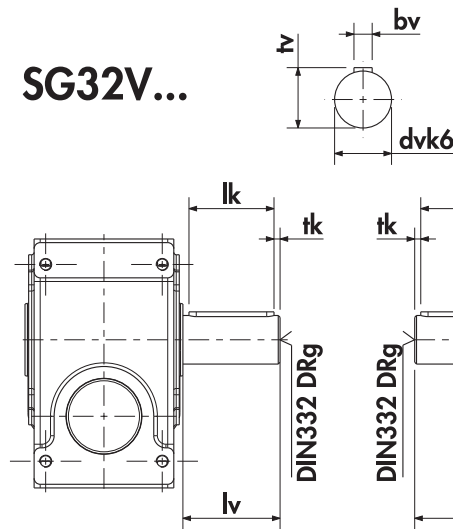
dv	tv	bv	lv	lk	tk	g	lz
30	33	8	60	50	5	M10	250
*35	38	10	70	60	5	M12	270

SMB/SMR	LB	AD	LBK	ADK	AC	LR
63	207	97	260	125	125	216
71	223	105	280	137	140	216
80	251	110	311	147	154	216
90S	276	121	360	164	170	216
90L	301	121	385	164	170	216
100	329	157	418	174	193	220
112M	334	169	413	199	216	220
132S						
132M						
132Ma						
160M						
160L						
180M						
180L						
200L						
225S						
225M						
250M						

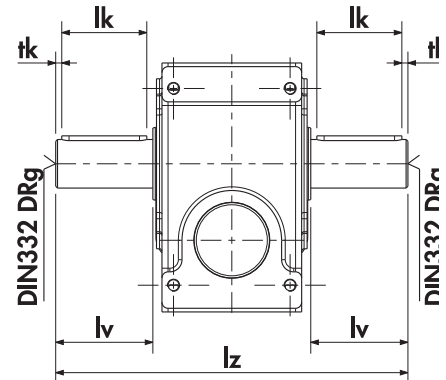
\* Standard

\*\* C Flange DIN42948

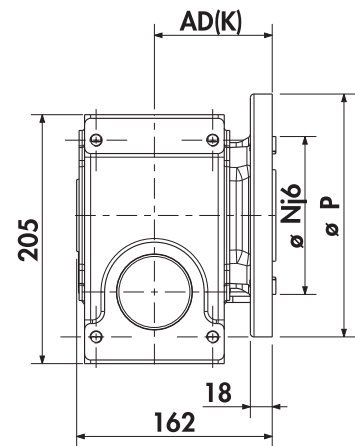
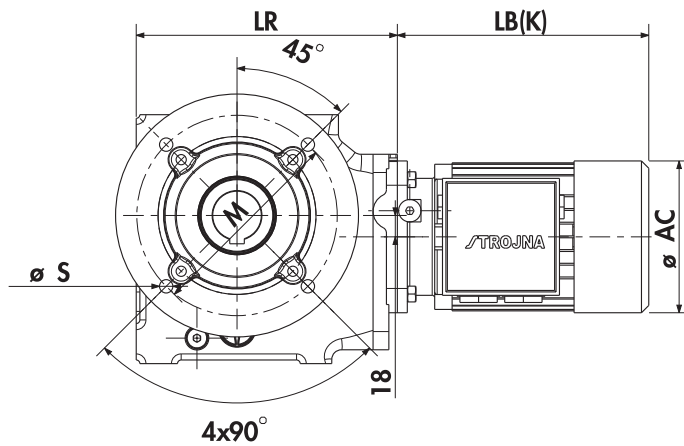
## SG32V...



## SG32Z...

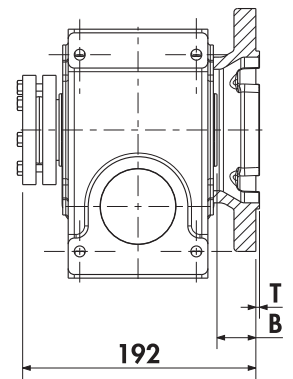
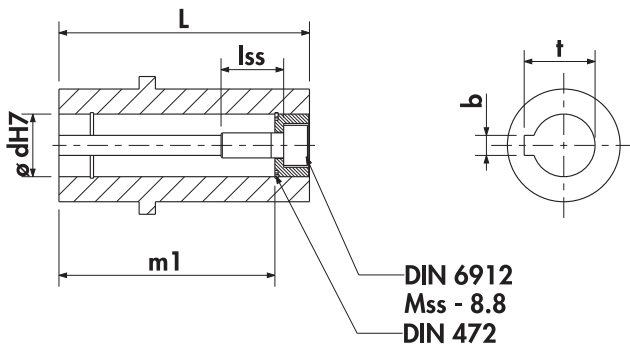


## SG32P...SMB/SMR



DIN42948	P	N	M	T	B	S
*A200	200	130	165	3	32	11
A250	250	180	215	4	32	14

## SG32PD...

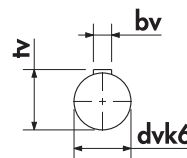


d	L	m1	lss	Mss	t	b
30	130	122	25	M10	33,3	8
*35	130	115	30	M12	38,3	10

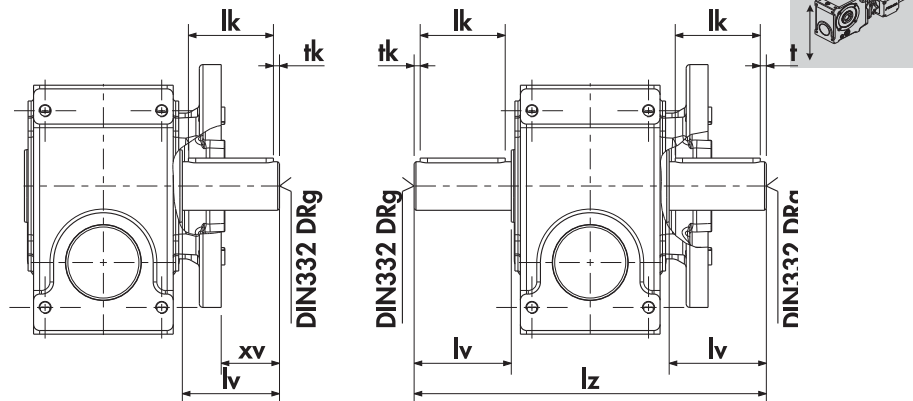
dv	tv	bv	lv	lk	tk	xv	g	lz
30	33	8	60	50	5	27	M10	250
*35	38	10	70	40	5	37	M12	270

SMB/SMR	LB	AD	LBK	ADK	AC	LR
63	207	97	260	125	125	216
71	223	105	280	137	140	216
80	251	110	311	147	154	216
90S	276	121	360	164	170	216
90L	301	121	385	164	170	216
100	329	157	418	174	193	220
112M	334	169	413	199	216	220
132S						
132M						
132Ma						
160M						
160L						
180M						
180L						
200L						
225S						
225M						
250M						

## SG32PV...



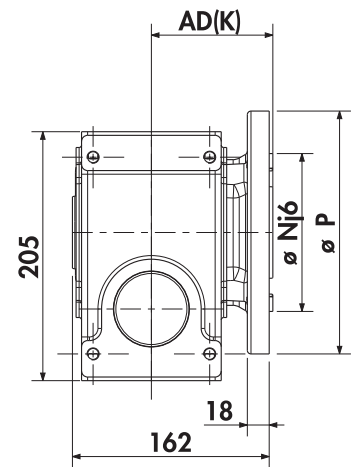
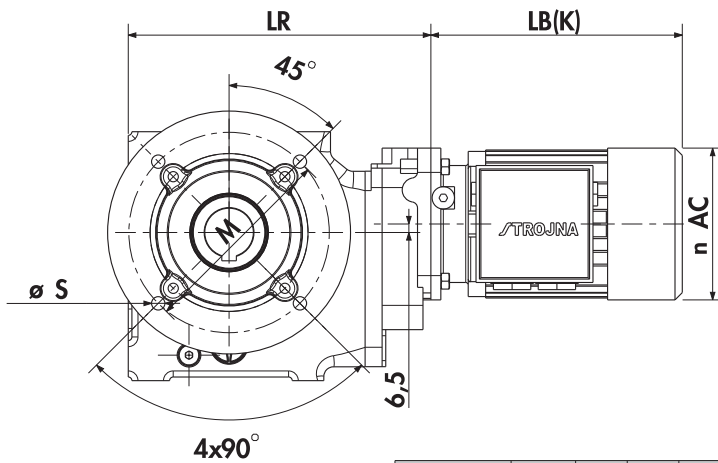
## SG32PZ...



\* Standard

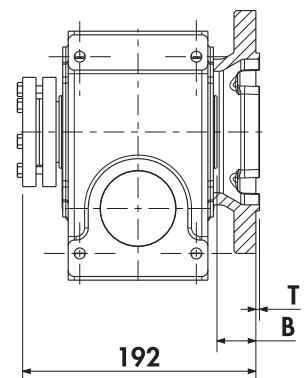
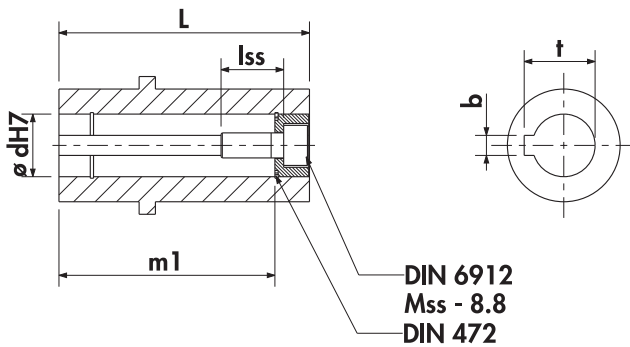


## SG33P...SMB/SMR



DIN42948	P	N	M	T	B	S
*A200	200	130	165	3	32	11
A250	250	180	215	4	32	14

## SG33PD...

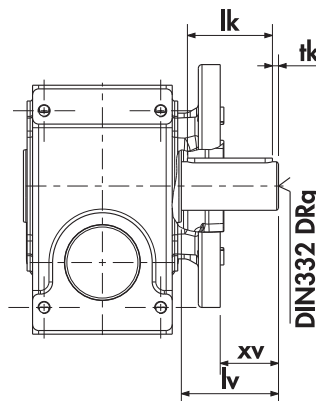
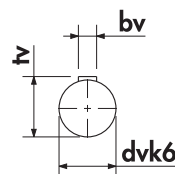


d	L	m1	lss	Mss	t	b
30	130	122	25	M10	33,3	8
*35	130	115	30	M12	38,3	10

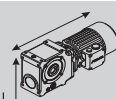
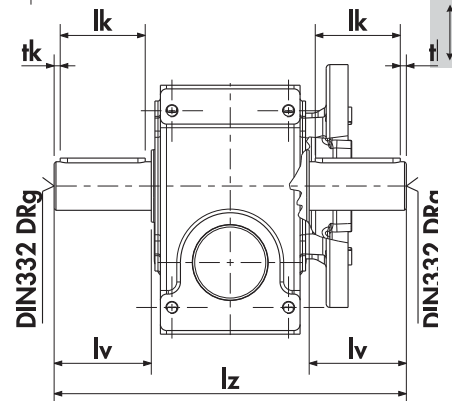
dv	tv	bv	lv	lk	tk	xv	g	lz
30	33	8	60	50	5	27	M10	250
*35	38	10	70	60	5	37	M12	270

SMB/SMR	LB	AD	LBK	ADK	AC	LR
63	207	97	260	125	125	249
71	223	105	280	137	140	249
80	251	110	311	147	154	249
90S	276	121	360	164	170	249
90L	301	121	385	164	170	249
100						
112M						
132S						
132M						
132Ma						
160M						
160L						
180M						
180L						
200L						
225S						
225M						
250M						

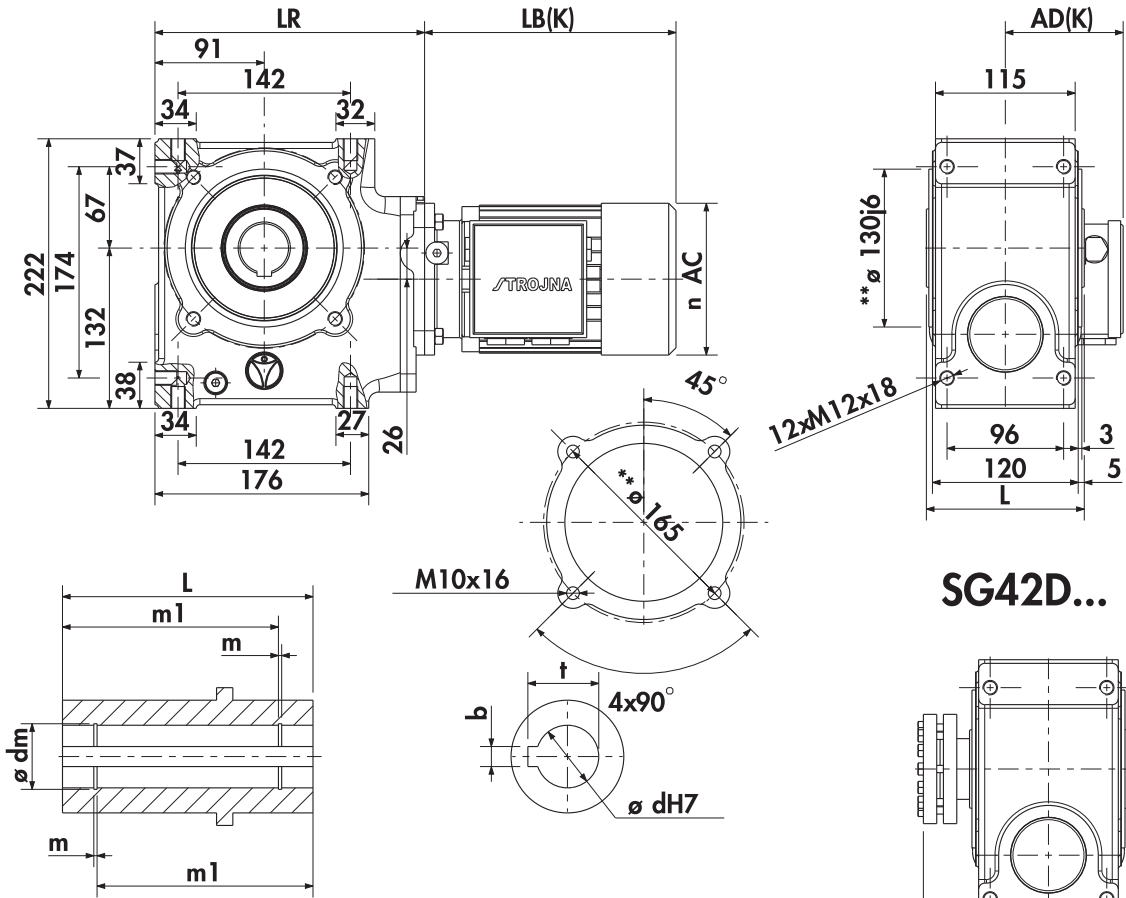
## SG33PV...



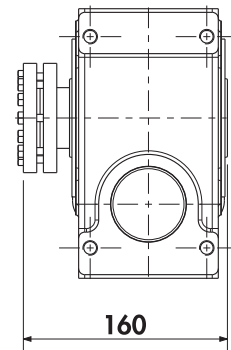
## SG33PZ...



### SG42...SMB/SMR



### SG42D...



d	L	m1	dm	m	t	b
40	130	108	42,5	1,85	43,3	12
*45	130	108	47,5	1,85	48,8	14

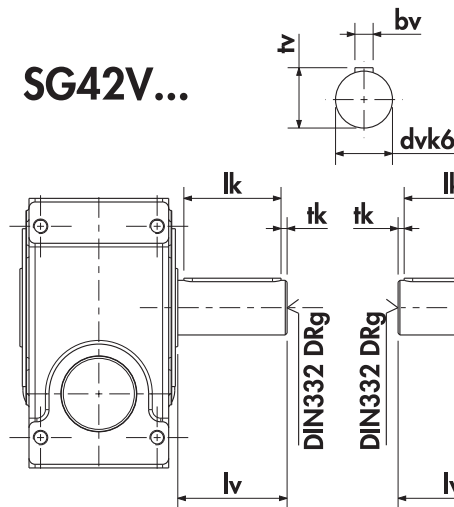
dv	tv	bv	lv	lk	tk	g	lz
40	43	12	80	70	5	M16	290
*45	48,5	14	90	80	5	M16	310

SMB/SMR	LB	AD	LBK	ADK	AC	LR
63	207	97	260	125	125	221
71	223	105	280	137	140	221
80	251	110	311	147	154	221
90S	276	121	360	164	170	221
90L	301	121	385	164	170	221
100	329	157	418	174	193	225
112M	334	169	413	199	216	225
132S						
132M						
132Ma						
160M						
160L						
180M						
180L						
200L						
225S						
225M						
250M						

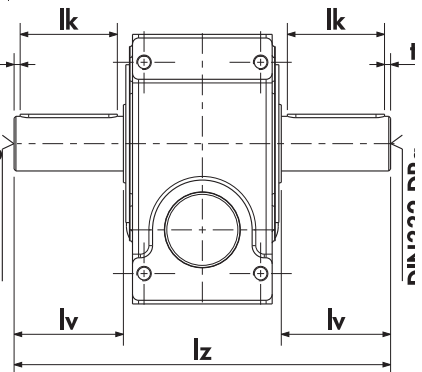
\* Standard

\*\* C Flange DIN42948

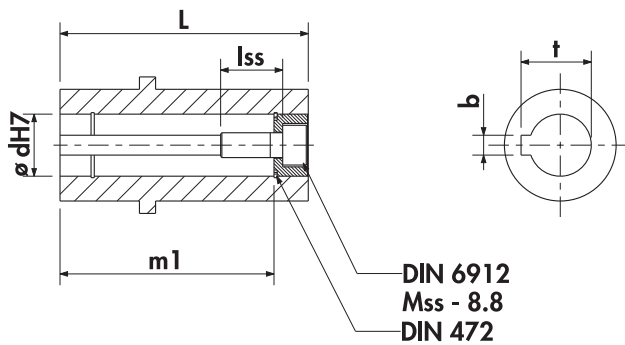
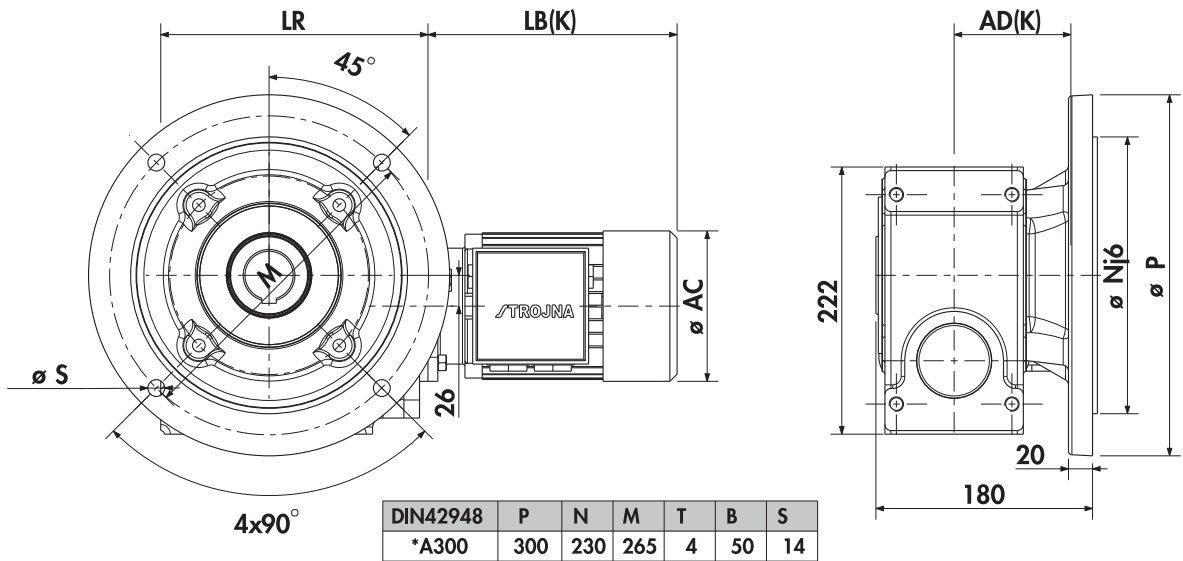
### SG42V...



### SG42Z...



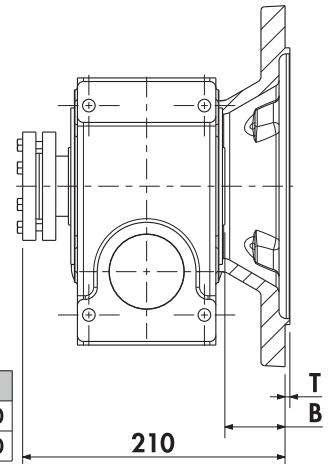
### SG42P...SMB/SMR



d	L	m1	lss	Mss	t	b
40	130	108	40	M16	43,3	12
*45	130	108	40	M16	48,8	14

dv	tv	bv	lv	lk	tk	xv	g	lz
40	43	12	80	70	5	27	M16	290
*45	48,5	14	90	80	5	37	M16	310

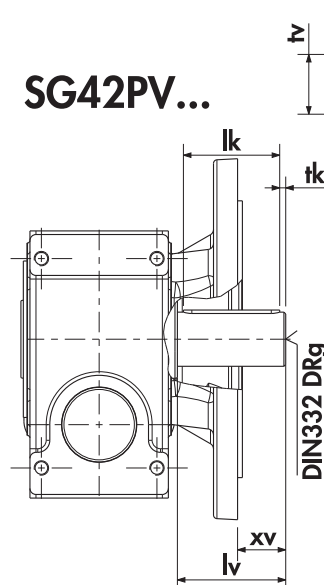
### SG42PD...



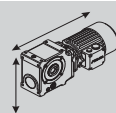
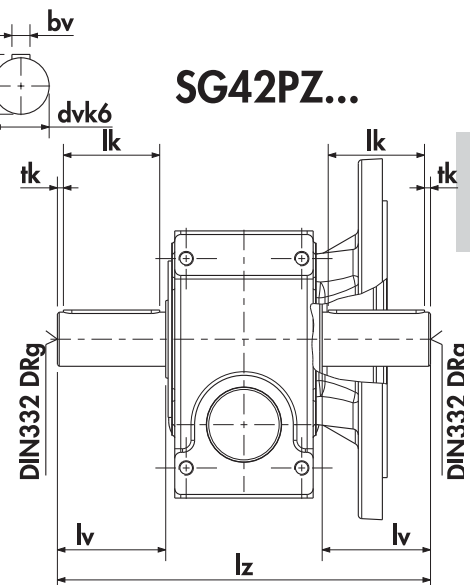
SMB/SMR	LB	AD	LBK	ADK	AC	LR
63	207	97	260	125	125	221
71	223	105	280	137	140	221
80	251	110	311	147	154	221
90S	276	121	360	164	170	221
90L	301	121	385	164	170	221
100	329	157	418	174	193	225
112M	334	169	413	199	216	225
132S						
132M						
132Ma						
160M						
160L						
180M						
180L						
200L						
225S						
225M						
250M						

\* Standard

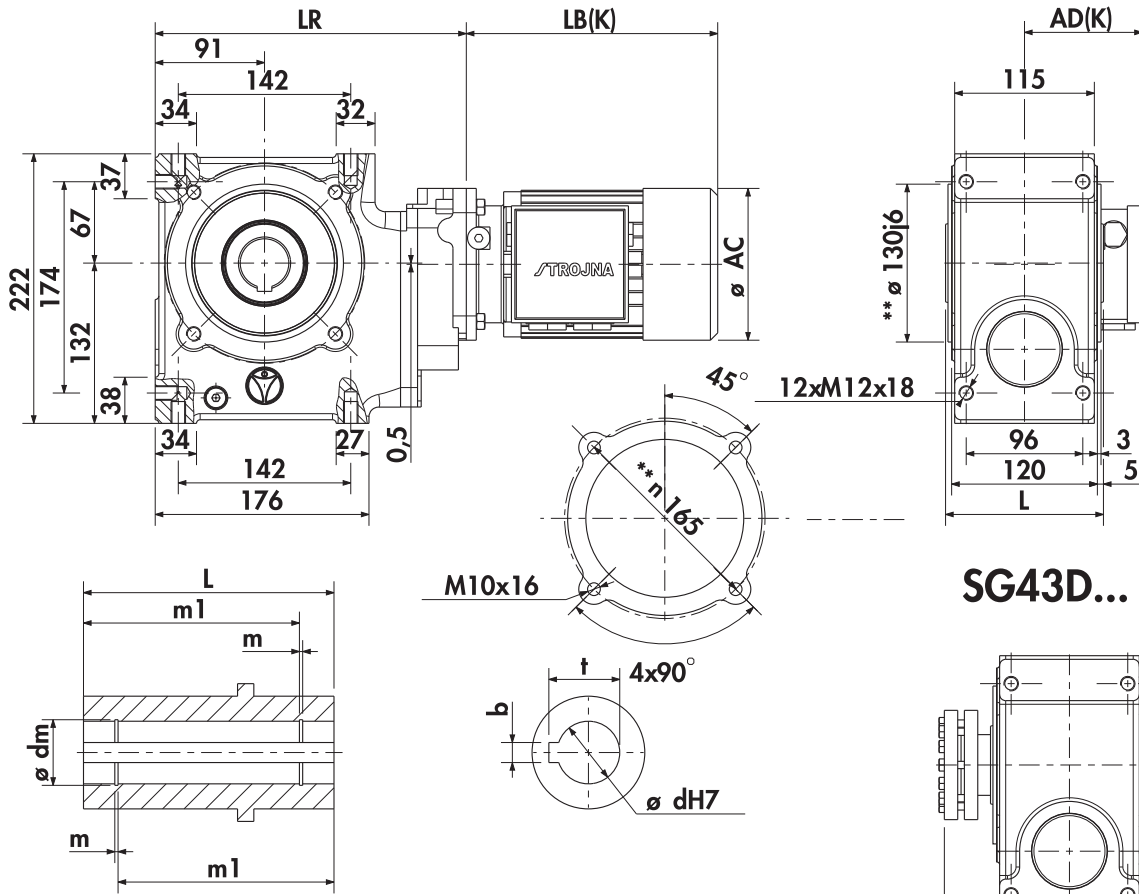
### SG42PV...



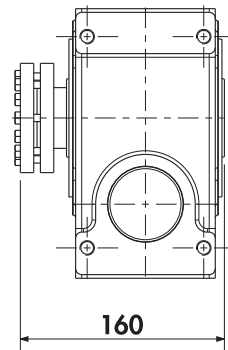
### SG42PZ...



## SG43...SMB/SMR



## SG43D...



d	L	m1	dm	m	t	b
40	130	108	42,5	1,85	43,3	12
*45	130	108	47,5	1,85	48,8	14

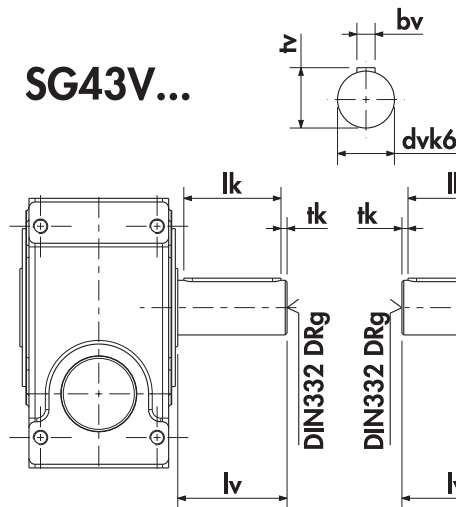
dv	tv	bv	lv	lk	tk	g	lz
40	43	12	80	70	5	M16	290
*45	48,5	14	90	80	5	M16	310

SMB/SMR	LB	AD	LBK	ADK	AC	LR
63	207	97	260	125	125	257
71	223	105	280	137	140	257
80	251	110	311	147	154	257
90S	276	121	360	164	170	257
90L	301	121	385	164	170	257
100						
112M						
132S						
132M						
132Ma						
160M						
160L						
180M						
180L						
200L						
225S						
225M						
250M						

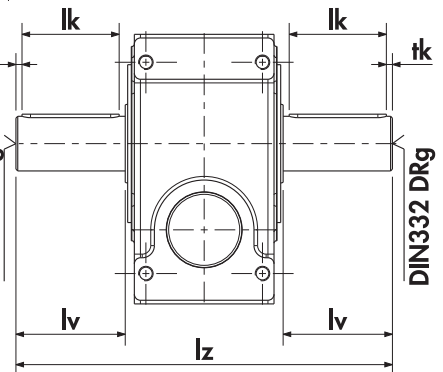
\* Standard

\*\* C Flange DIN42948

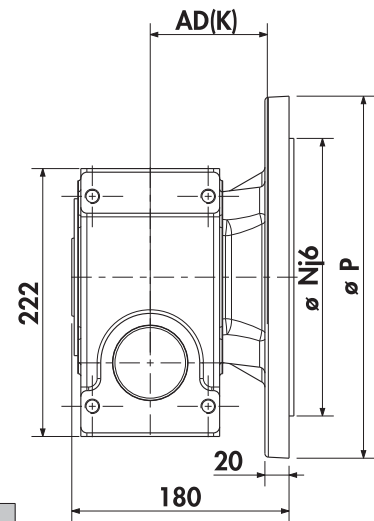
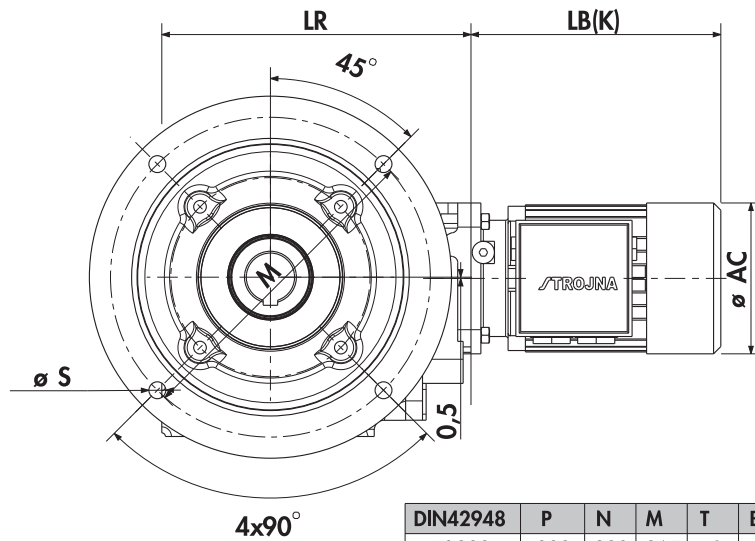
## SG43V...



## SG43Z...

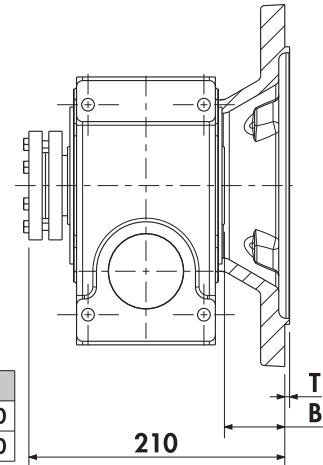
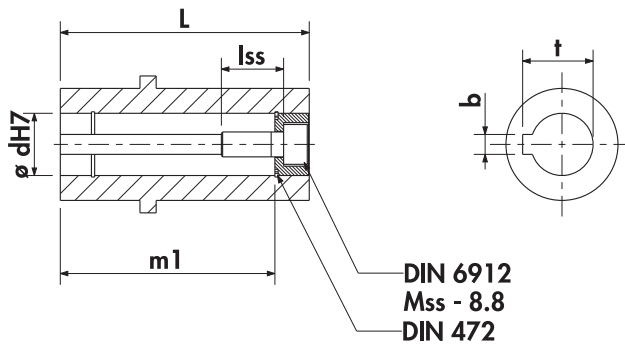


## SG43P...SMB/SMR



DIN42948	P	N	M	T	B	S
*A300	300	230	265	4	50	14

## SG43PD...

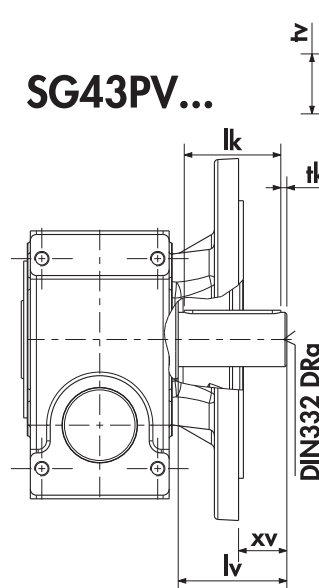


d	L	m1	lss	Mss	t	b
40	130	108	40	M16	43,3	12
*45	130	108	40	M16	48,8	14

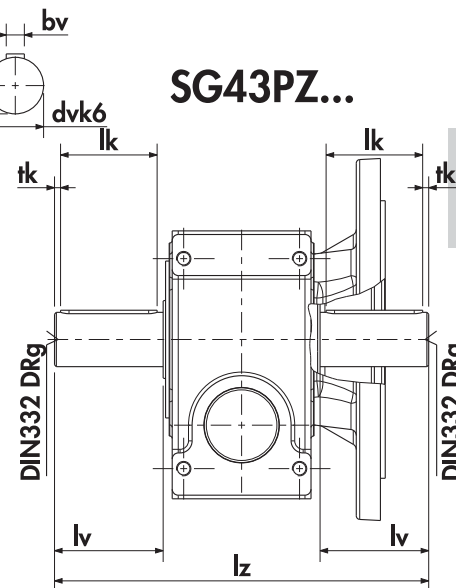
dv	tv	bv	lv	lk	tk	xv	g	lz
40	43	12	80	70	5	27	M16	290
*45	48,5	14	90	80	5	37	M16	310

SMB/SMR	LB	AD	LBK	ADK	AC	LR
63	207	97	260	125	125	257
71	223	105	280	137	140	257
80	251	110	311	147	154	257
90S	276	121	360	164	170	257
90L	301	121	385	164	170	257
100						
112M						
132S						
132M						
132Ma						
160M						
160L						
180M						
180L						
200L						
225S						
225M						
250M						

## SG43PV...

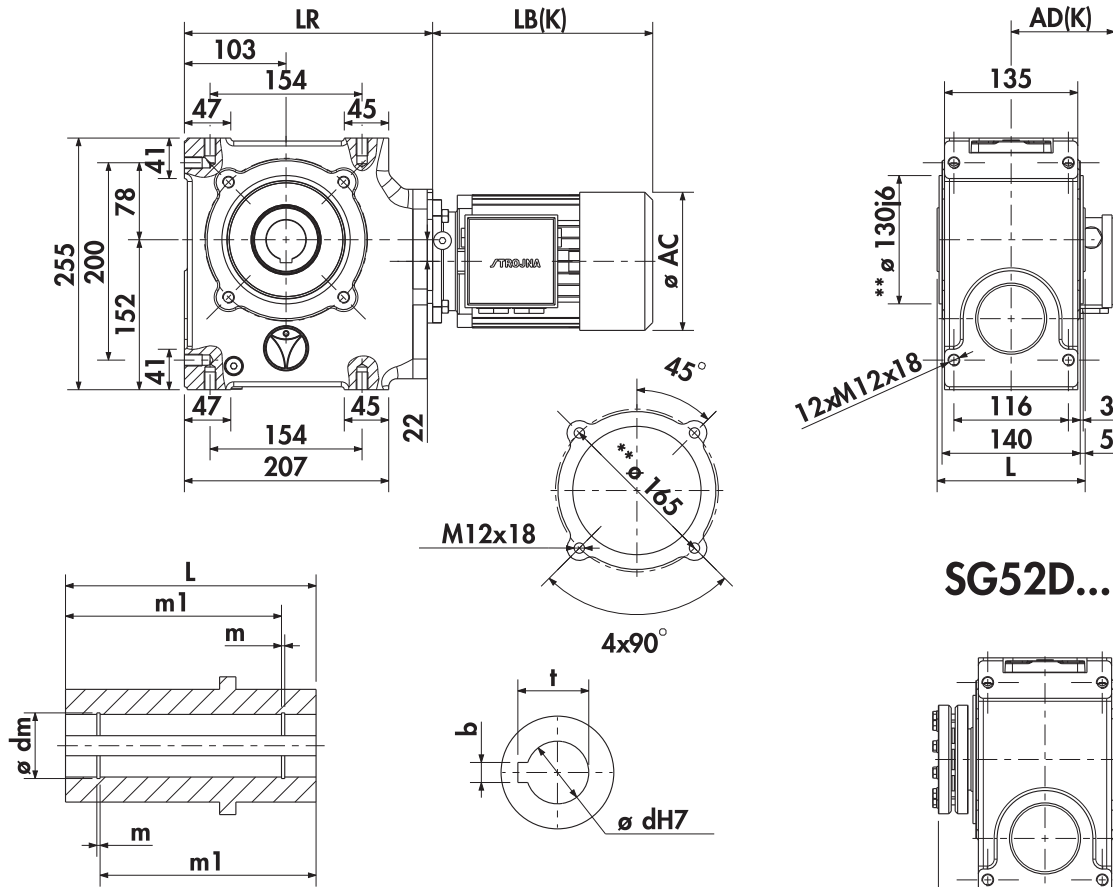


## SG43PZ...

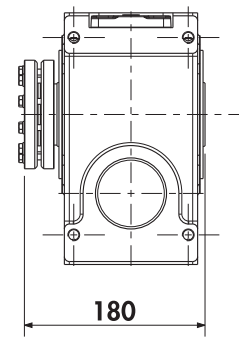


\* Standard

### SG52...SMB/SMR



### SG52D...

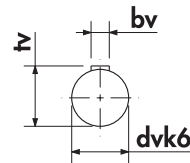


d	L	m1	dm	m	t	b
40	150	138	42,5	1,85	43,3	12
*45	150	133	47,5	1,85	48,8	14

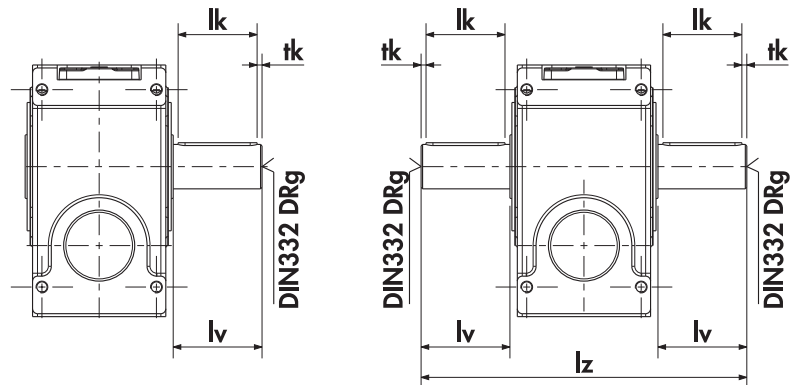
dv	tv	bv	lv	lk	tk	g	lz
40	43	12	80	70	5	M16	310
*45	48,5	14	90	80	5	M16	330

SMB/SMR	LB	AD	LBK	ADK	AC	LR
63	207	97	260	125	125	252
71	223	105	280	137	140	252
80	251	110	311	147	154	252
90S	276	121	360	164	170	252
90L	301	121	385	164	170	252
100	329	157	418	174	193	256
112M	334	169	413	199	216	256
132S	377	190	492	183	247	269
132M	415	190	532	183	247	269
132Mα	415	190	532	183	247	269
160M						
160L						
180M						
180L						
200L						
225S						
225M						
250M						

### SG52V...



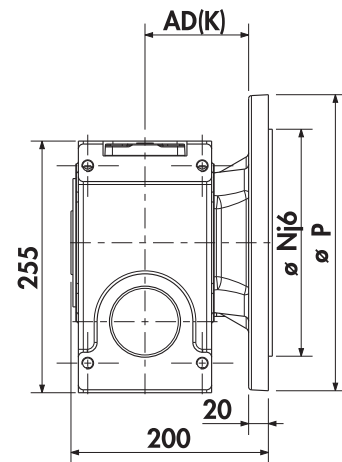
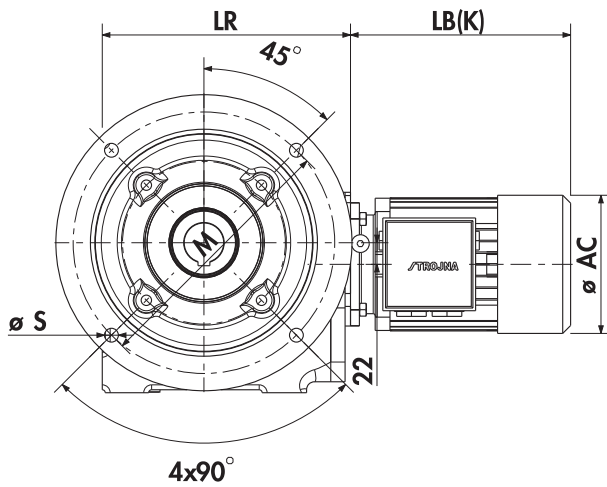
### SG52Z...



\* Standard

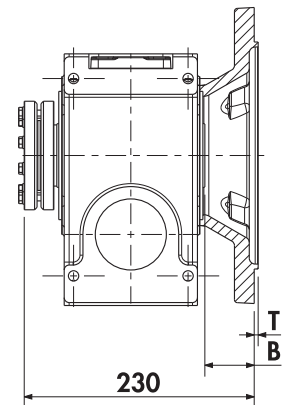
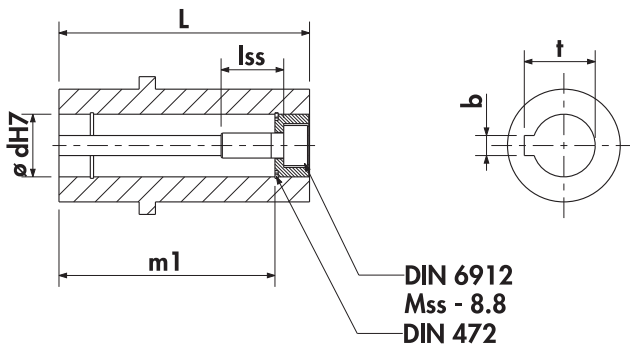
\*\* C Flange DIN42948

## SG52P...SMB/SMR



DIN42948	P	N	M	T	B	S
*A300	300	230	265	4	50	14

## SG52PD...

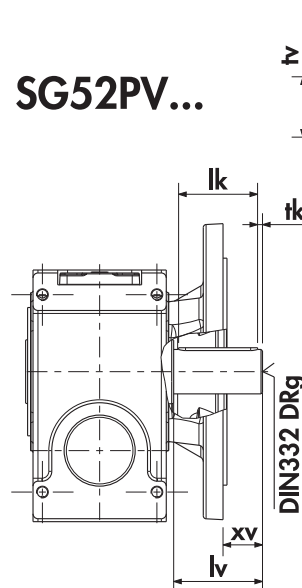


d	L	m1	lss	Mss	t	b
40	150	138	40	M16	43,3	12
*45	150	133	40	M16	48,8	14

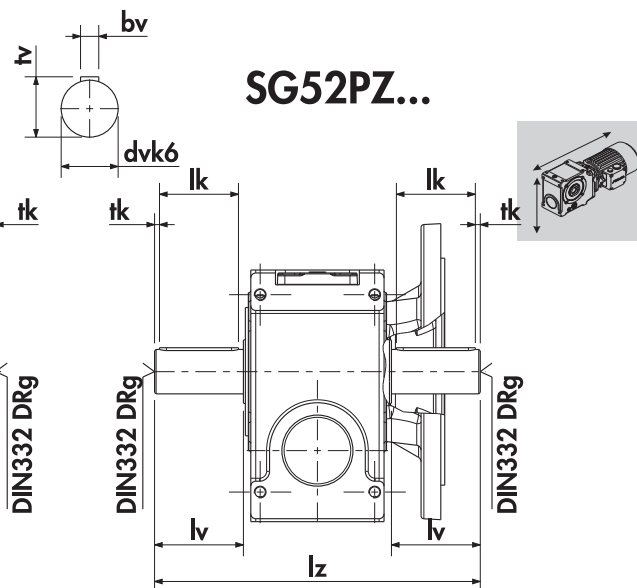
dv	tv	bv	lv	lk	tk	xv	g	lz
40	43	12	80	70	5	27	M16	310
*45	48,5	14	90	80	5	37	M16	330

SMB/SMR	LB	AD	LBK	ADK	AC	LR
63	207	97	260	125	125	252
71	223	105	280	137	140	252
80	251	110	311	147	154	252
90S	276	121	360	164	170	252
90L	301	121	385	164	170	252
100	329	157	418	174	193	256
112M	334	169	413	199	216	256
132S	377	190	492	183	247	269
132M	415	190	532	183	247	269
132Ma	415	190	532	183	247	269
160M						
160L						
180M						
180L						
200L						
225S						
225M						
250M						

## SG52PV...

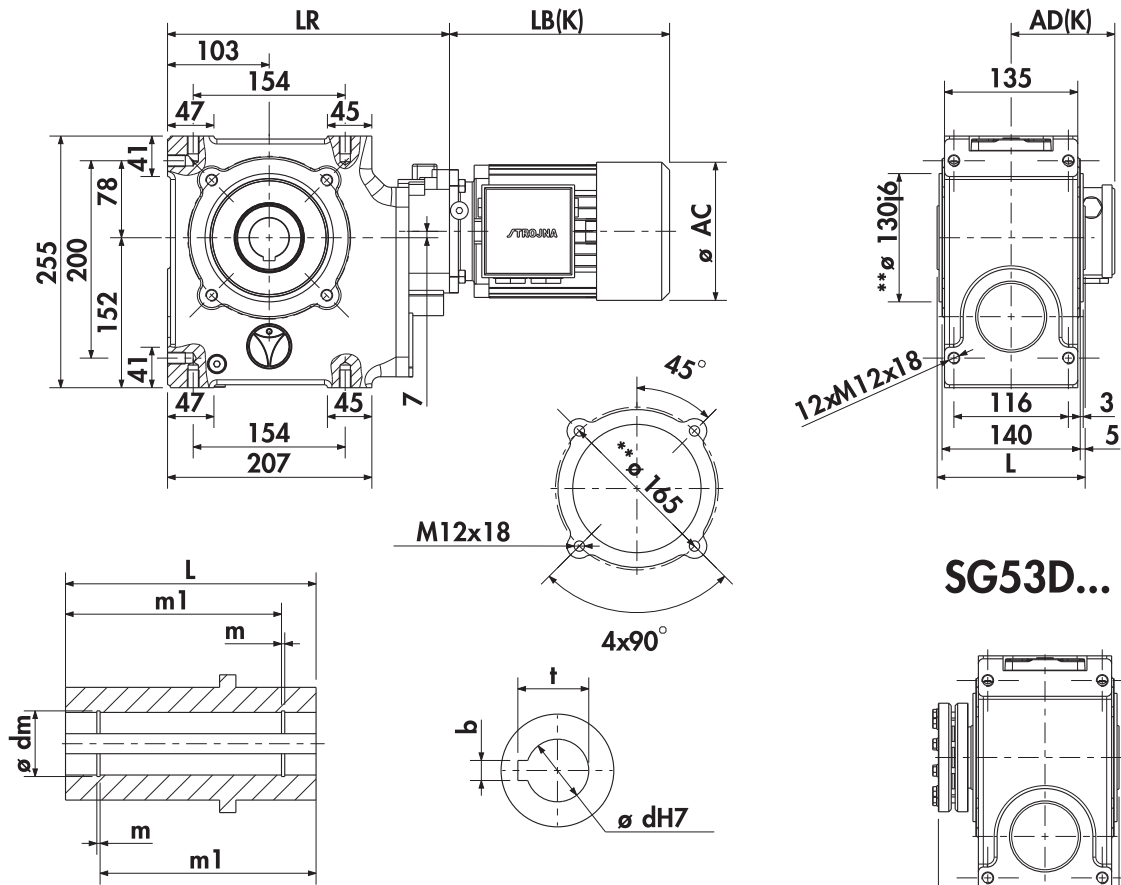


## SG52PZ...



\* Standard

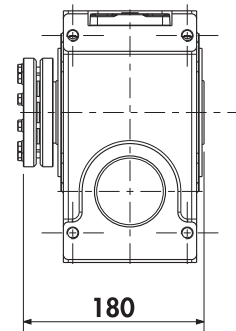
## SG53...SMB/SMR



d	L	m1	dm	m	t	b
40	150	138	42,5	1,85	43,3	12
*45	150	133	47,5	1,85	48,8	14

dv	tv	bv	lv	lk	tk	g	lz
40	43	12	80	70	5	M16	310
*45	48,5	14	90	80	5	M16	330

## SG53D...

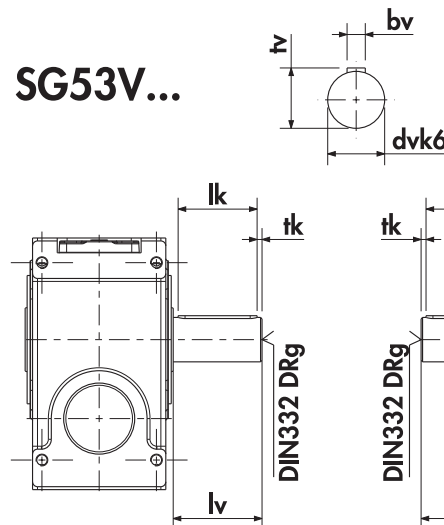


SMB/SMR	LB	AD	LBK	ADK	AC	LR
63	207	97	260	125	125	286
71	223	105	280	137	140	286
80	251	110	311	147	154	286
90S	276	121	360	164	170	286
90L	301	121	385	164	170	286
100						
112M						
132S						
132M						
132Mα						
160M						
160L						
180M						
180L						
200L						
225S						
225M						
250M						

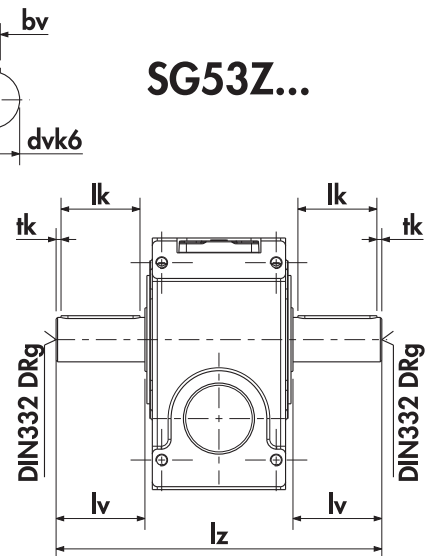
\* Standard

\*\* C Flange DIN42948

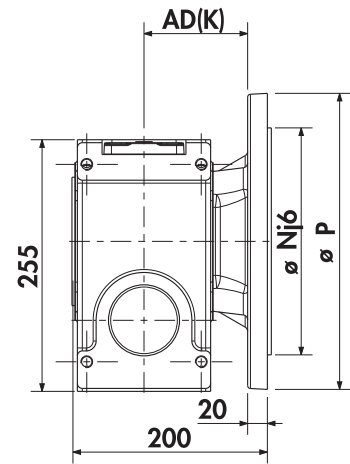
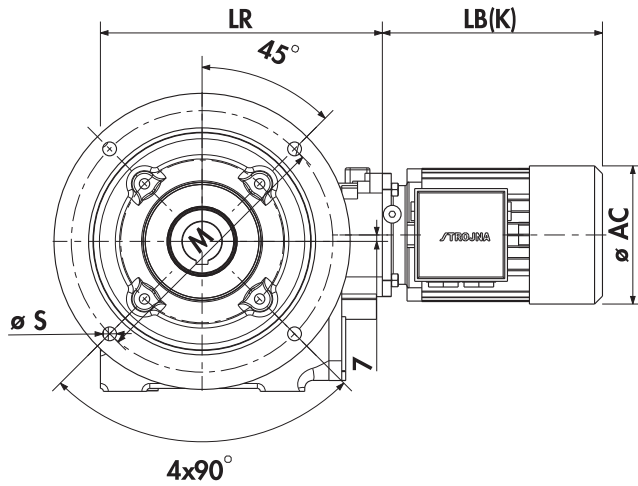
## SG53V...



## SG53Z...

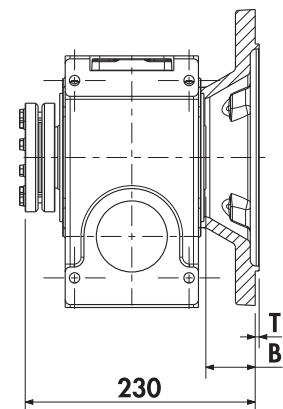
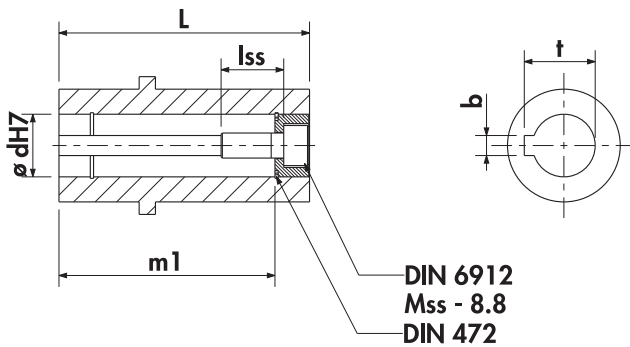


## SG53P...SMB/SMR



DIN42948	P	N	M	T	B	S
*A300	300	230	265	4	50	14

## SG53PD...

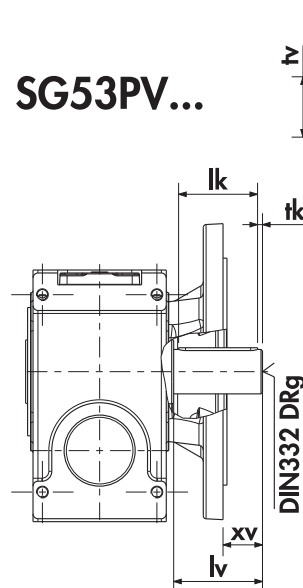


d	L	m1	lss	Mss	t	b
40	150	138	40	M16	43,3	12
*45	150	133	40	M16	48,8	14

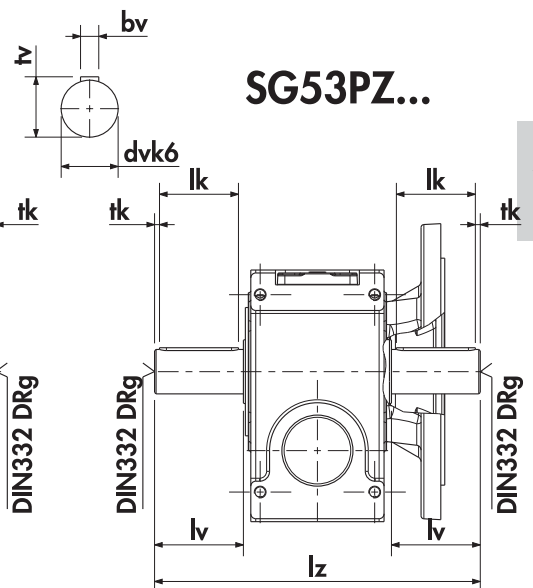
dv	tv	bv	lv	lk	tk	xv	g	lz
40	43	12	80	70	5	27	M16	310
*45	48,5	14	90	80	5	37	M16	330

SMB/SMR	LB	AD	LBK	ADK	AC	LR
63	207	97	260	125	125	286
71	223	105	280	137	140	286
80	251	110	311	147	154	286
90S	276	121	360	164	170	286
90L	301	121	385	164	170	286
100						
112M						
132S						
132M						
132Ma						
160M						
160L						
180M						
180L						
200L						
225S						
225M						
250M						

## SG53PV...

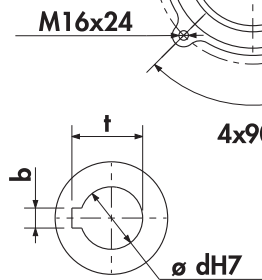
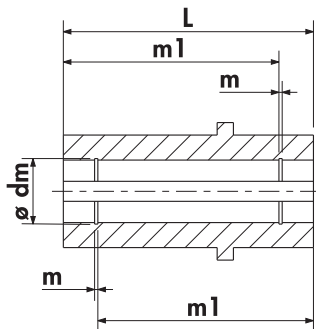
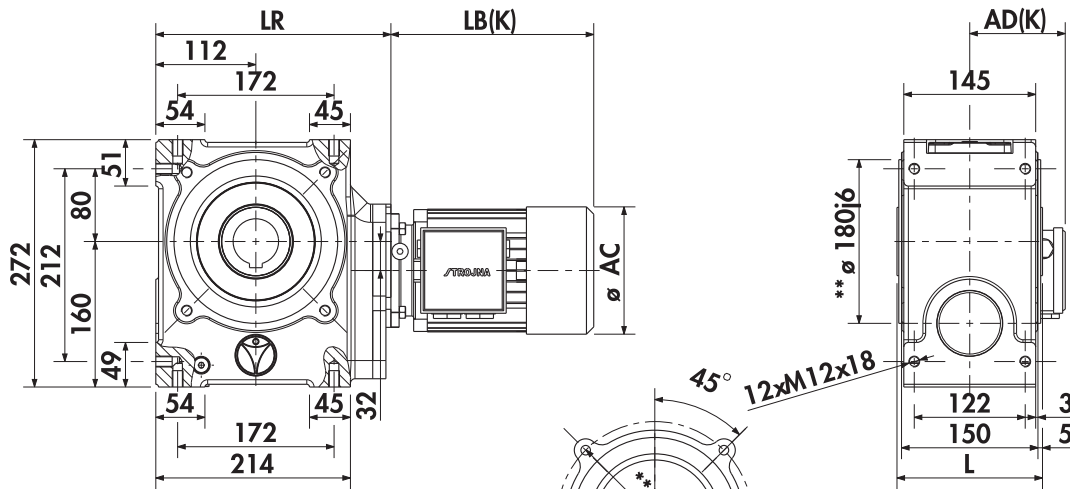


## SG53PZ...

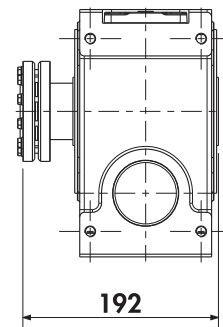


\* Standard

## SG62...SMB/SMR



## SG62D...



d	L	m1	dm	m	t	b
*50	160	143	53	2,15	53,8	14

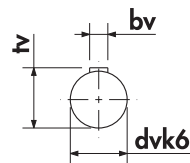
dv	tv	bv	lv	lk	tk	g	lz
*50	53,5	14	100	80	10	M16	360

SMB/SMR	LB	AD	LBK	ADK	AC	LR
63	207	97	260	125	125	258
71	223	105	280	137	140	258
80	251	110	311	147	154	258
90S	276	121	360	164	170	258
90L	301	121	385	164	170	258
100	329	157	418	174	193	362
112M	334	169	413	199	216	362
132S	377	190	492	183	247	375
132M	415	190	532	183	247	375
132Ma	415	190	532	183	247	375
160M						
160L						
180M						
180L						
200L						
225S						
225M						
250M						

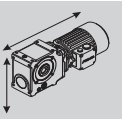
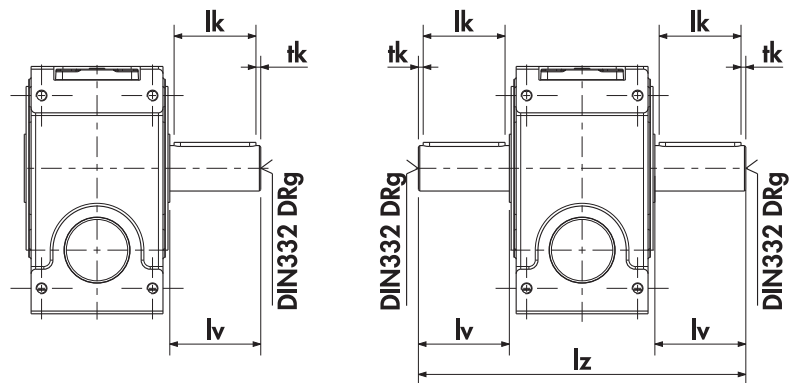
\* Standard

\*\* C Flange DIN42948

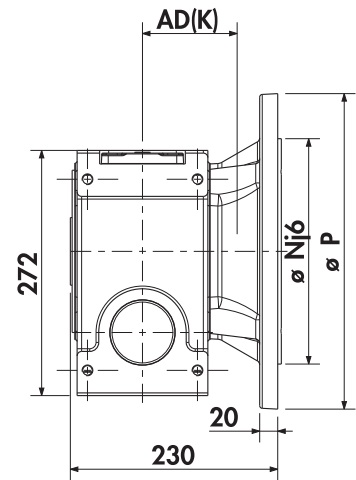
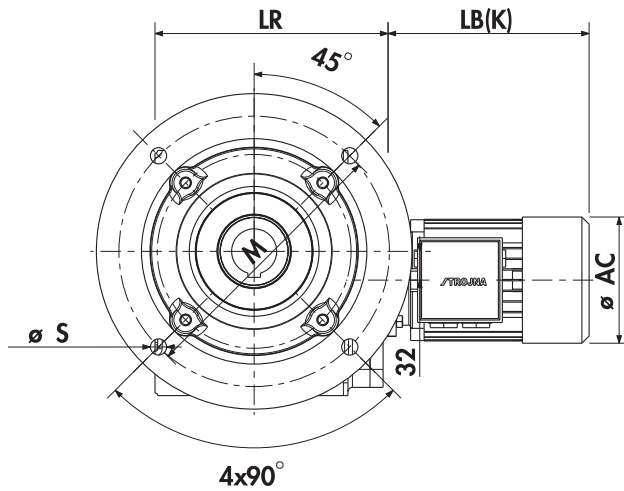
## SG62V...



## SG62Z...

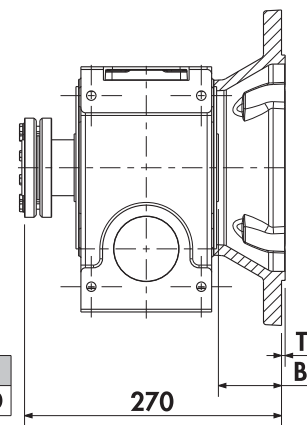
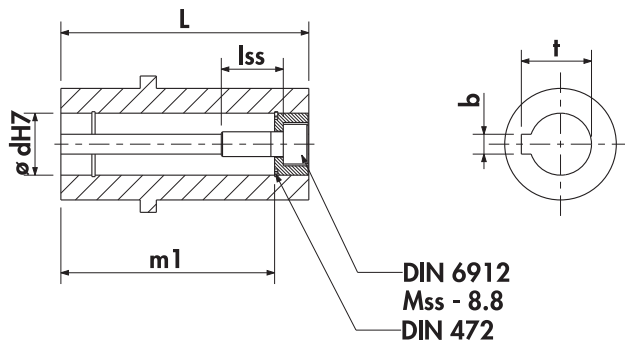


## SG62P...SMB/SMR



DIN42948	P	N	M	T	B	S
*A350	350	250	300	4	70	18

## SG62PD...



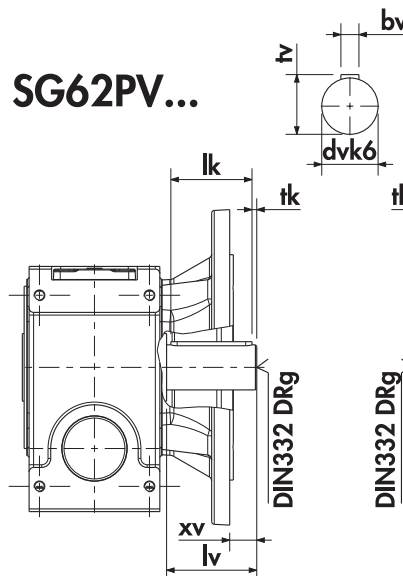
d	L	m1	lss	Mss	t	b
*50	160	143	40	M16	53,8	14

dv	tv	bv	lv	lk	tk	xv	g	lz
*50	53,5	14	100	80	10	27	M16	360

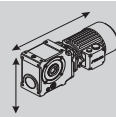
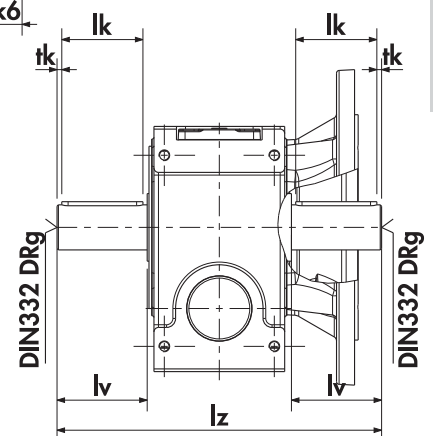
SMB/SMR	LB	AD	LBK	ADK	AC	LR
63	207	97	260	125	125	258
71	223	105	280	137	140	258
80	251	110	311	147	154	258
90S	276	121	360	164	170	258
90L	301	121	385	164	170	258
100	329	157	418	174	193	362
112M	334	169	413	199	216	362
132S	377	190	492	183	247	375
132M	415	190	532	183	247	375
132Ma	415	190	532	183	247	375
160M						
160L						
180M						
180L						
200L						
225S						
225M						
250M						

\* Standard

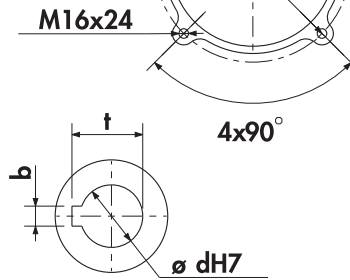
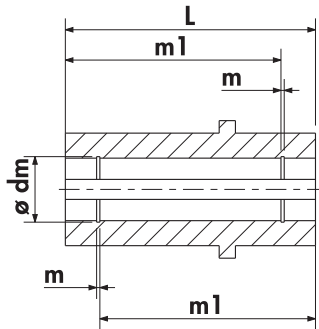
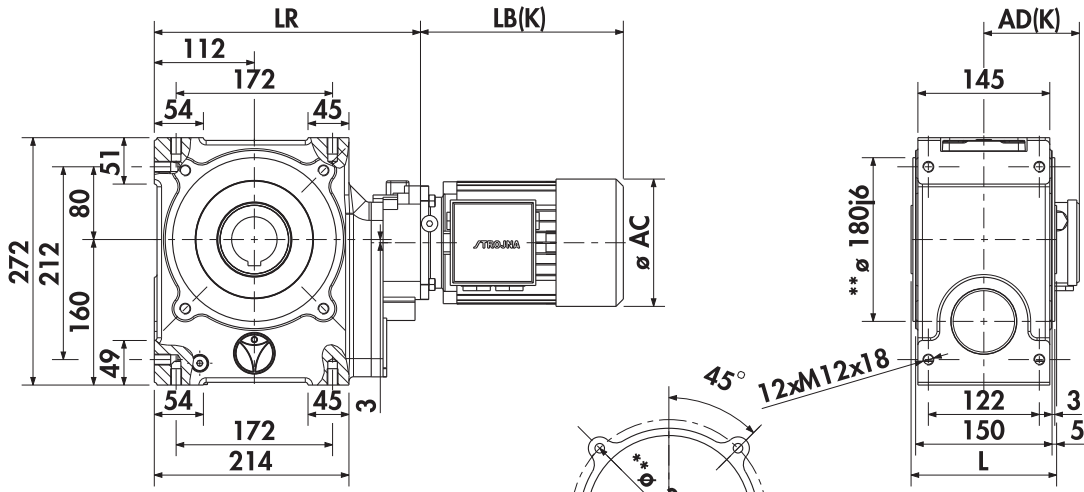
## SG62PV...



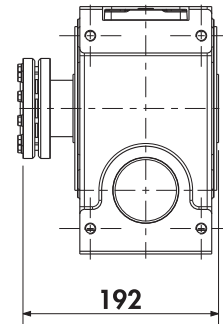
## SG62PZ...



## SG63...SMB/SMR



## SG63D...



d	L	m1	dm	m	t	b
*50	160	143	53	2,15	53,8	14

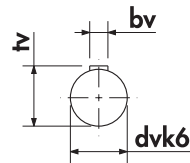
dv	tv	bv	lv	lk	tk	g	lz
*50	53,5	14	100	80	10	M16	360

SMB/SMR	LB	AD	LBK	ADK	AC	LR
63	207	97	260	125	125	292
71	223	105	280	137	140	292
80	251	110	311	147	154	292
90S	276	121	360	164	170	292
90L	301	121	385	164	170	292
100						
112M						
132S						
132M						
132M $\alpha$						
160M						
160L						
180M						
180L						
200L						
225S						
225M						
250M						

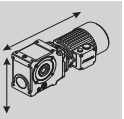
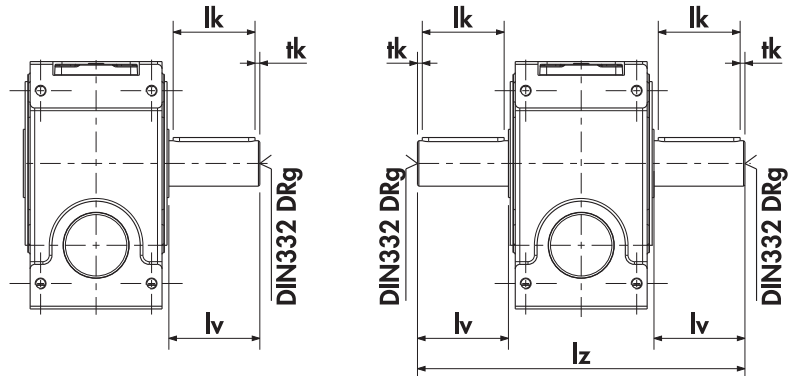
\* Standard

\*\* C Flange DIN42948

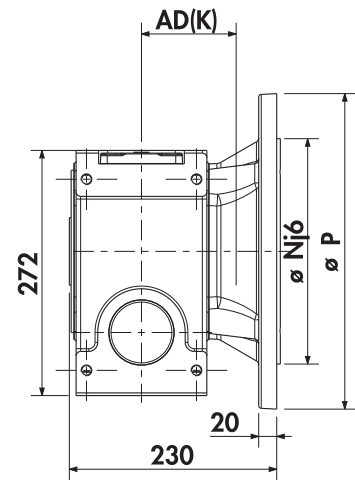
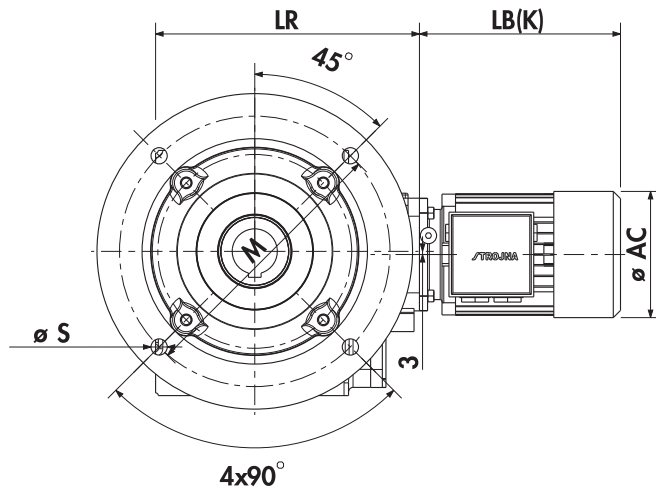
## SG63V...



## SG63Z...

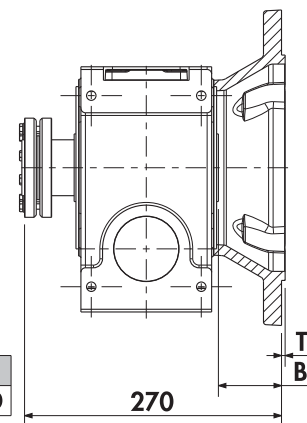
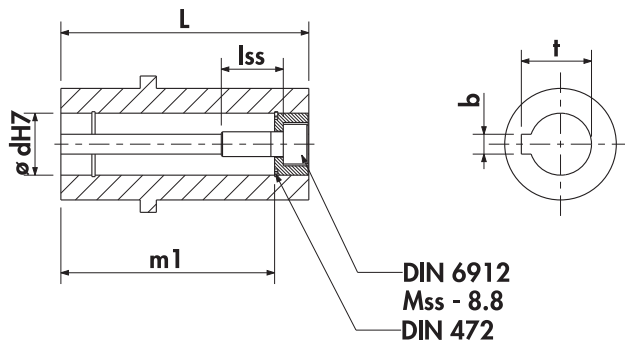


## SG63P...SMB/SMR



DIN42948	P	N	M	T	B	S
*A350	350	250	300	4	70	18

## SG63PD...



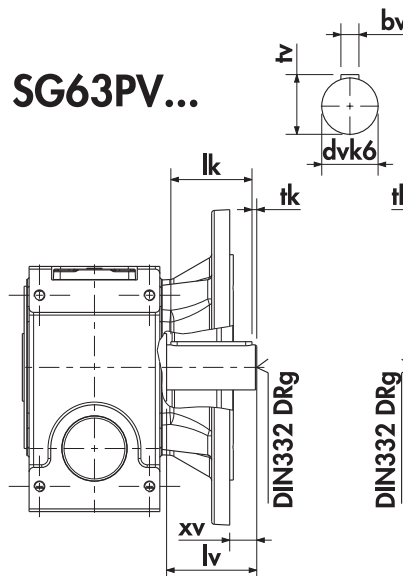
d	L	m1	lss	Mss	t	b
*50	160	143	40	M16	53,8	14

dv	tv	bv	lv	lk	tk	xv	g	lz
*50	53,5	14	100	80	10	27	M16	360

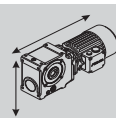
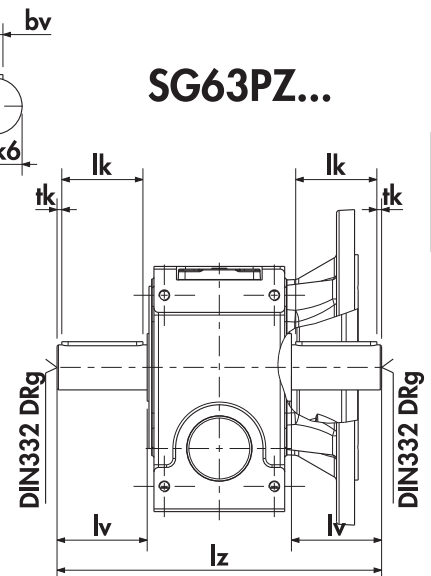
SMB/SMR	LB	AD	LBK	ADK	AC	LR
63	207	97	260	125	125	292
71	223	105	280	137	140	292
80	251	110	311	147	154	292
90S	276	121	360	164	170	292
90L	301	121	385	164	170	292
100						
112M						
132S						
132M						
132Ma						
160M						
160L						
180M						
180L						
200L						
225S						
225M						
250M						

\* Standard

## SG63PV...



## SG63PZ...



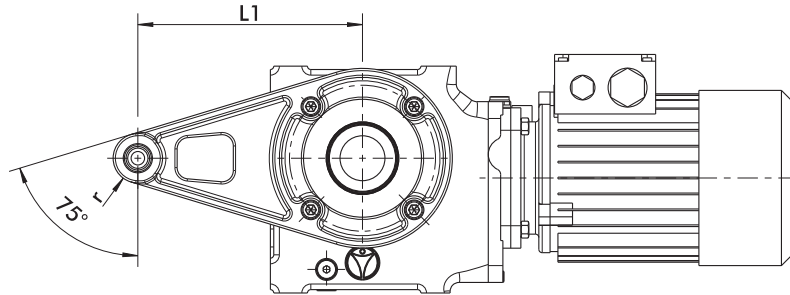
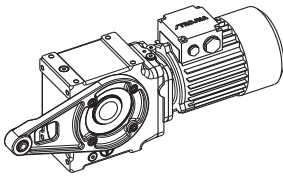
Torque Arm

SG...SM/MR

Position

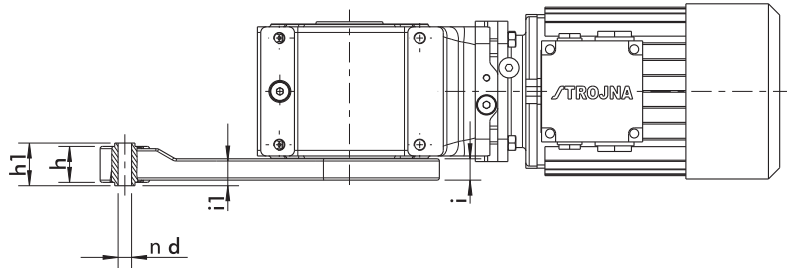
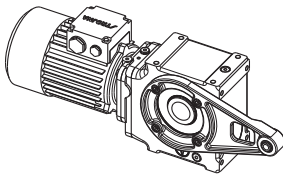
Left

SG...SM/MRL...



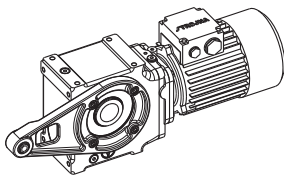
Right

SG...SM/MRD...

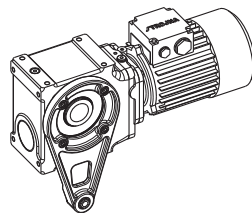


Direction

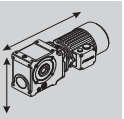
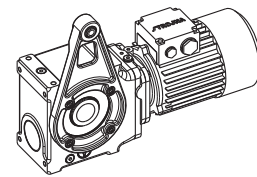
SG...SM/MR...0



SG...SM/MR...1



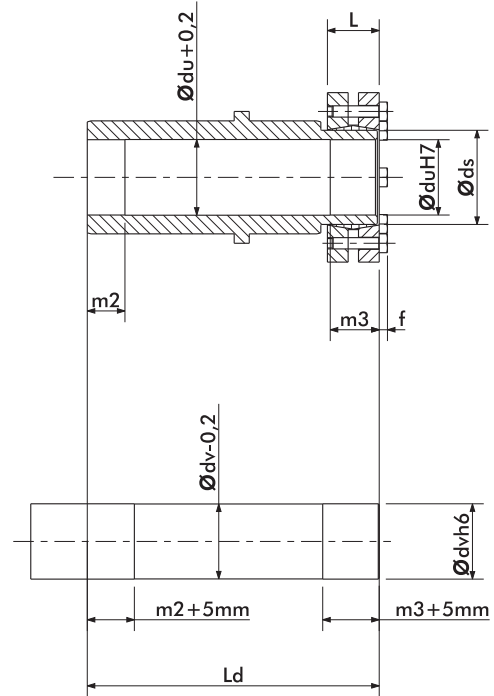
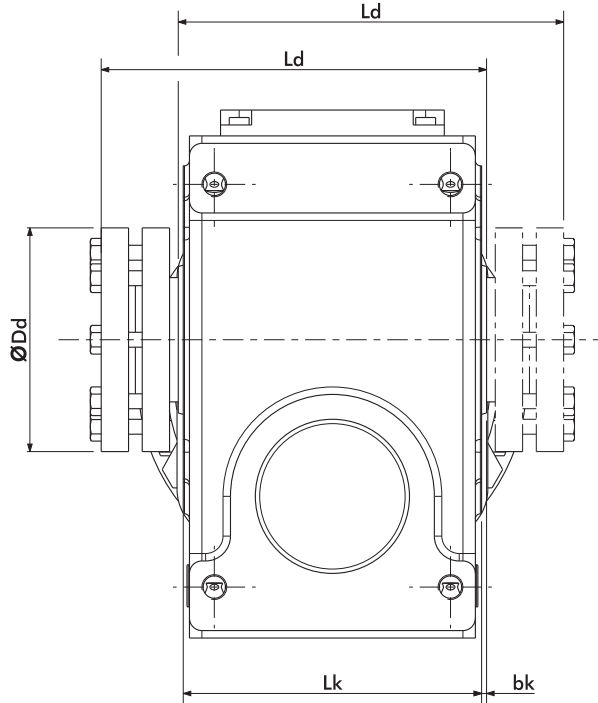
SG...SM/MR...2



	L1	r	h	h1	d	i1	i
SG1	132	23	32	38	12	20	15
SG2	160	23	32	38	12	22	17
SG3	180	23	32	38	12	26	21
SG4	200	23	32	38	12	26	21
SG5	225	36	56	62,5	20	33	23
SG6	250	36	56	62,5	20	36,25	23

Shrink disc

SG...(P)D SM



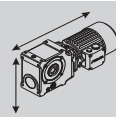
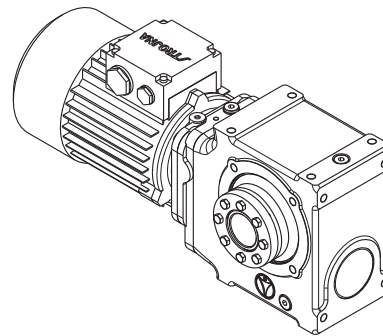
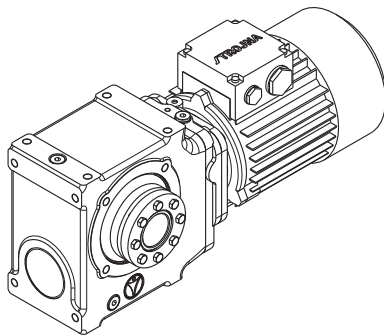
Position

Left

SG...(P)DL SM

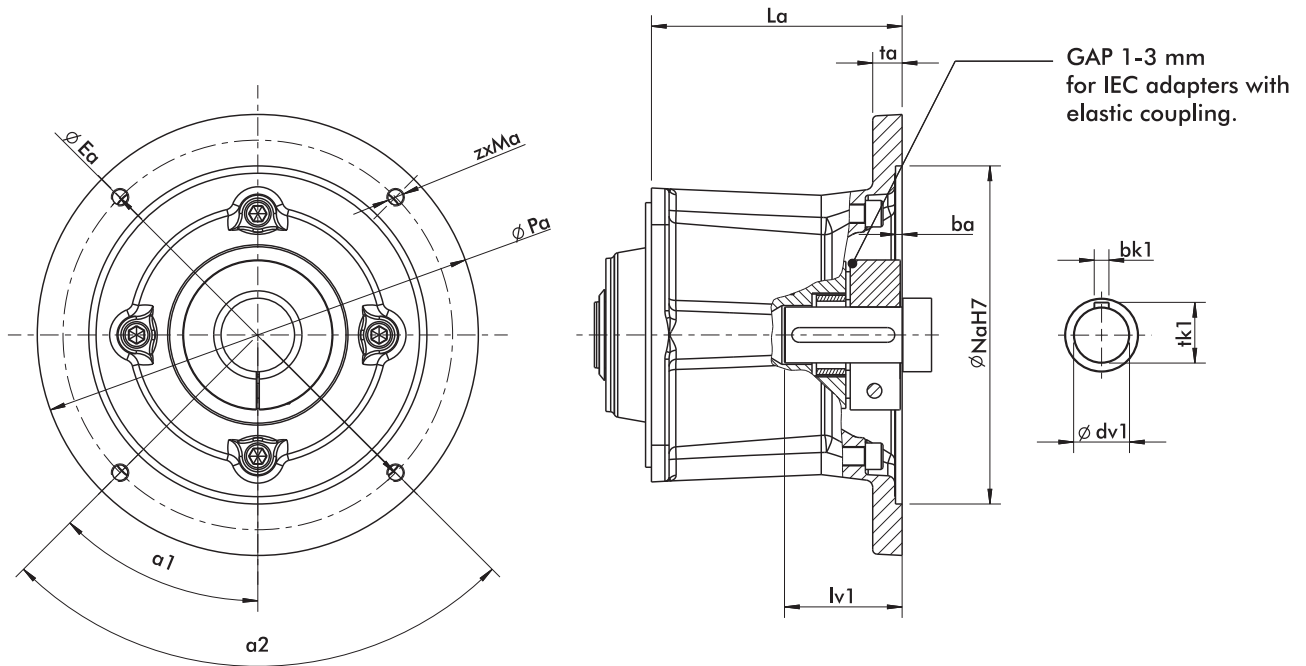
Right

SG...(P)DD SM



	m2	m3	Lk	bk	Ld	du/dv	ds	Dd	L	f	M <sub>smax</sub> [Nm]	M <sub>p</sub> [Nm]
SG1	20	20	95	5	130	30	36	72	23,5	4	570	12
SG2	20	25	105	5	140	35	44	80	25,5	4	780	12
SG3	30	25	124	3	160	40	50	90	27,5	4	1160	12
SG4	30	25	120	5	160	40	50	90	27,5	4	1160	12
SG5	30	30	140	5	180	50	62	110	30,5	4	2200	12
SG6	30	30	150	5	192	50	62	110	30,5	4	2200	12

## Dimensions - IEC adapter



IEC-B5	Pa	Na	ba	Ea	zxMa	$\alpha 1$	$\alpha 2$	La	ta	dv1	lv1	tk1	bk1	m (kg)
A63	140	95	3,5	115	4xM8	45°	90°	68	10	11j6	23	12,5	4	3
A71	160	110	4	130	4xM8	45°	90°	68	10	14j6	30	16	5	3
A80	200	130	4	165	4xM10	45°	90°	96	14	19j6	40	21,5	6	6
A90	200	130	4	165	4xM10	45°	90°	96	14	24j6	50	27	8	6
A100	250	180	4,5	215	4xM12	45°	90°	113	18	28j6	60	31	8	13
A112	250	180	4,5	215	4xM12	45°	90°	113	18	28j6	60	31	8	13
A132	300	230	4,5	265	4xM12	45°	90°	170,5	20	38k6	80	41	10	26
A160	350	250	4,5	300	4xM16	45°	90°	233	20	42k6	110	45	12	52
A180	350	250	5,5	300	4xM16	45°	90°	233	20	48k6	110	51,5	14	52
A200	400	300	6	350	4xM16	45°	90°	239	24	55m6	110	59	14	75
A225	450	350	6	400	8xM16	22,5°	45°	239	24	60m6	140	64	18	80
A250	550	450	6	500	8xM16	22,5°	45°	245	24	65m6	140	69	18	140
A280	550	450	6	500	8xM16	22,5°	45°	245	24	65m6	140	69	18	160
A315	660	550	7	600	8xM20	22,5°	45°	381	26	80m6	170	85,4	22	250

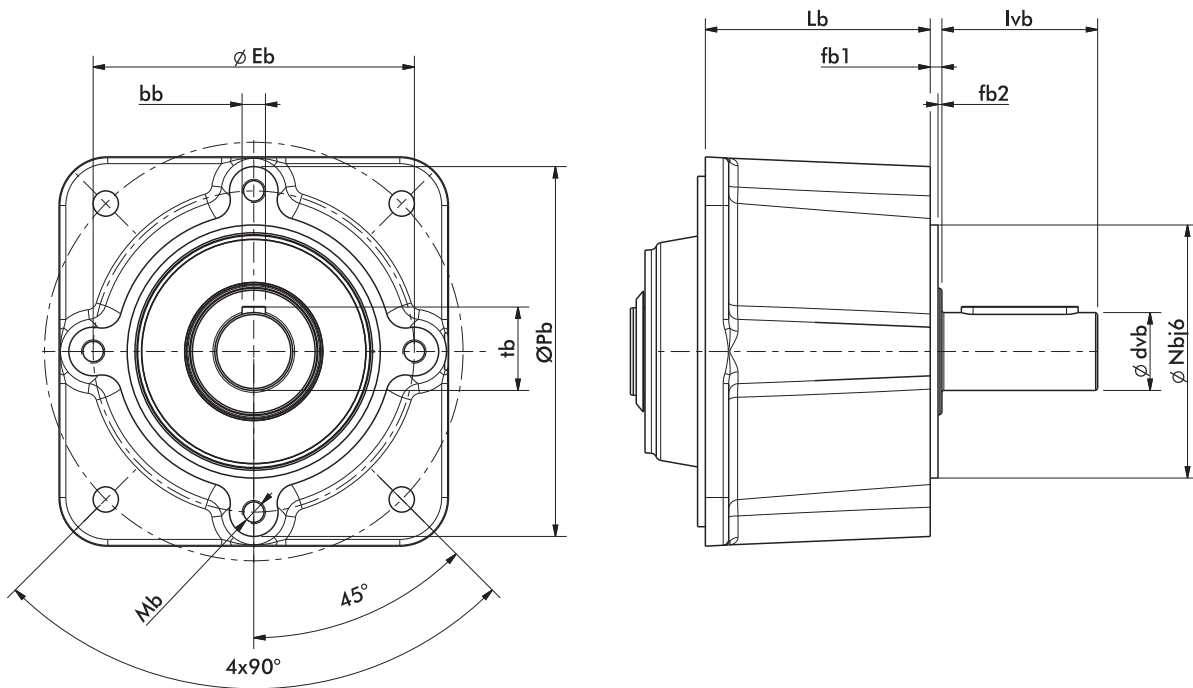


IEC-B14	Pa	Na	ba	Ea	zxMa	$\alpha 1$	$\alpha 2$	La	ta	dv1	lv1	tk1	bk1	m (kg)
A63	120	80	3,5	100	4x $\phi$ 7	45°	90°	68	8	11j6	23	12,5	4	2,5
A71	140	95	3,5	115	4x $\phi$ 9	45°	90°	68	10	14j6	30	16	5	3
A80	160	110	4	130	4x $\phi$ 9	45°	90°	96	14	19j6	40	21,5	6	5
A90	160	110	4	130	4x $\phi$ 9	45°	90°	96	14	24j6	50	27	8	5
A100	200	130	4	165	4x $\phi$ 11	45°	90°	113	18	28j6	60	31	8	11
A112	200	130	4	165	4x $\phi$ 11	45°	90°	113	18	28j6	60	31	8	11
A132	250	180	4,5	215	4x $\phi$ 13	45°	90°	140	20	38j6	80	41	10	23

IEC adapters are delivered by standard without elastic coupling with direct mounting.  
For IEC adapter with elastic coupling please specify request in order.

NOTICE: Please check with Stroina on using 2-pole IEC motors

## Dimensions Input shaft



Input shaft													
Type		Lb	lvb	fb1	fb2	d <sub>vb</sub>	tb	bb	Nb	Eb	Mb	Pb	m (kg)
B1	(63-71)	48,5	40	5	2	20j6	22,5	6	55	68	M6X10	80	2,5
B2	(80-90)	61	50	5	2	25j6	28	8	80	100	M8X14	116	4
B3	(100-112)	78	60	5	2	30k6	33	8	110	130	M10X17	150	8
B4	(132)	116	80	6	2	40k6	43	12	130	165	M12x20	190	17
B5	(160-180)	158	110	6	2	60m6	64	18	180	215	M16X24	245	38
B6	(200-225)	156	120	9	4	70m6	74,5	20	200	240	M20X35	280	60
B7	(250-280)	164	140	9	4	80m6	85	22	265	300	M24x36	350	110
B8	(315)	177	170	10	5	90m6	95	25	300	350	M24x36	450	200

